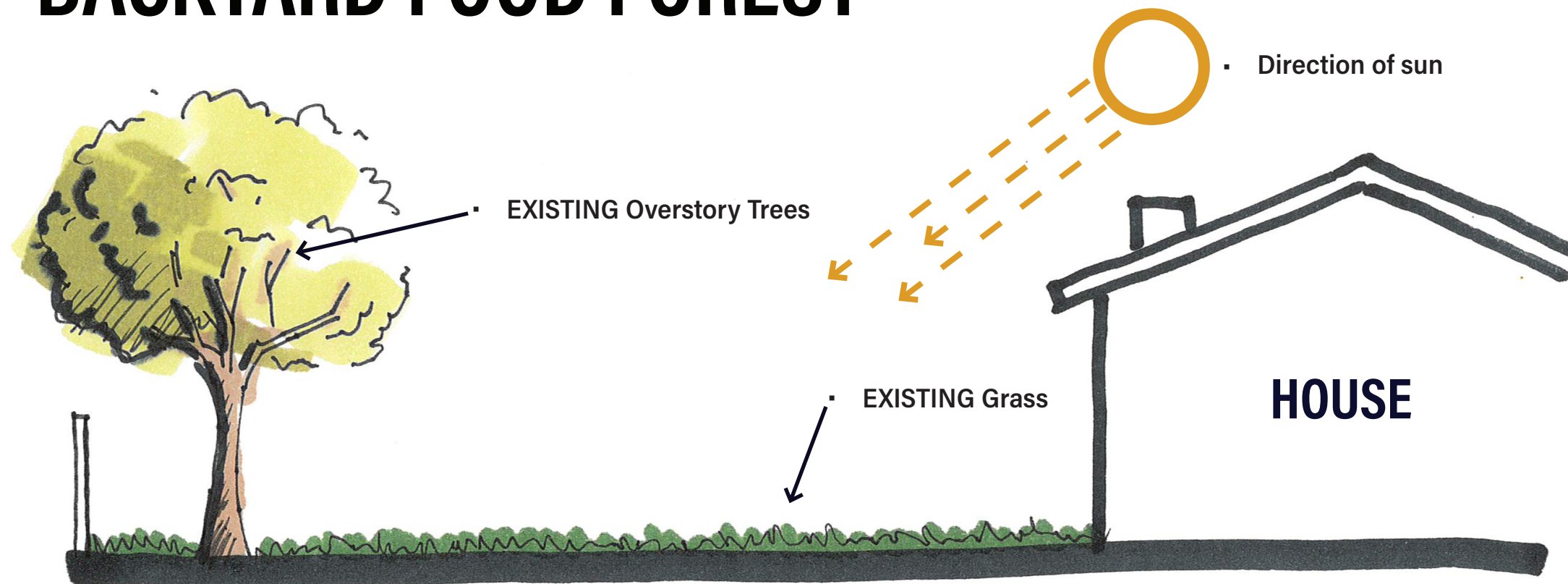
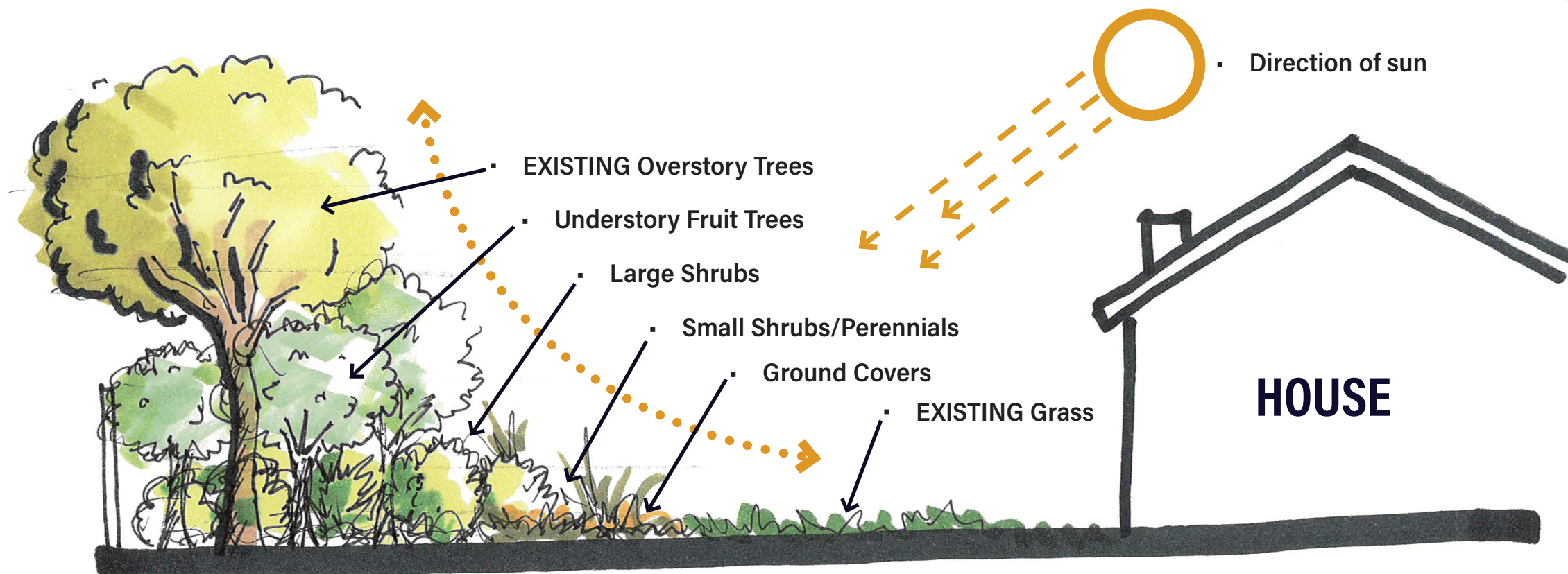


BACKYARD FOOD FOREST



BEFORE

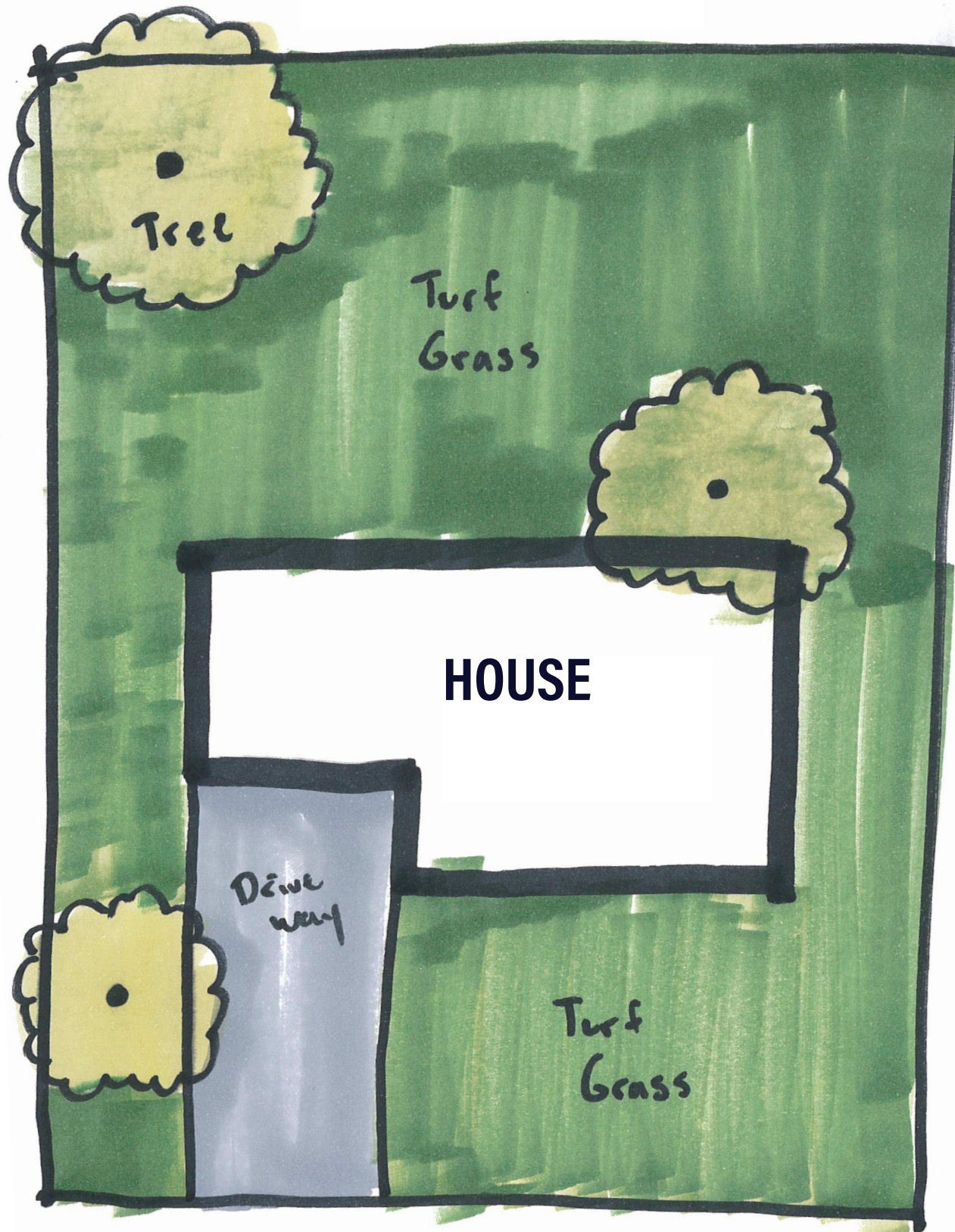
- All Turf Grass
- Few Trees
- Zero Productivity
- Monoculture
- Lack of "Pretty"
- High Maintenance
- High Water Usage



FOOD FOREST

- High Biodiversity
- Multiple Trees
- Maximum Productivity
- Polyculture
- Good Design "Pretty"
- Low Maintenance After Establishment
- Low Water Usage

BEFORE

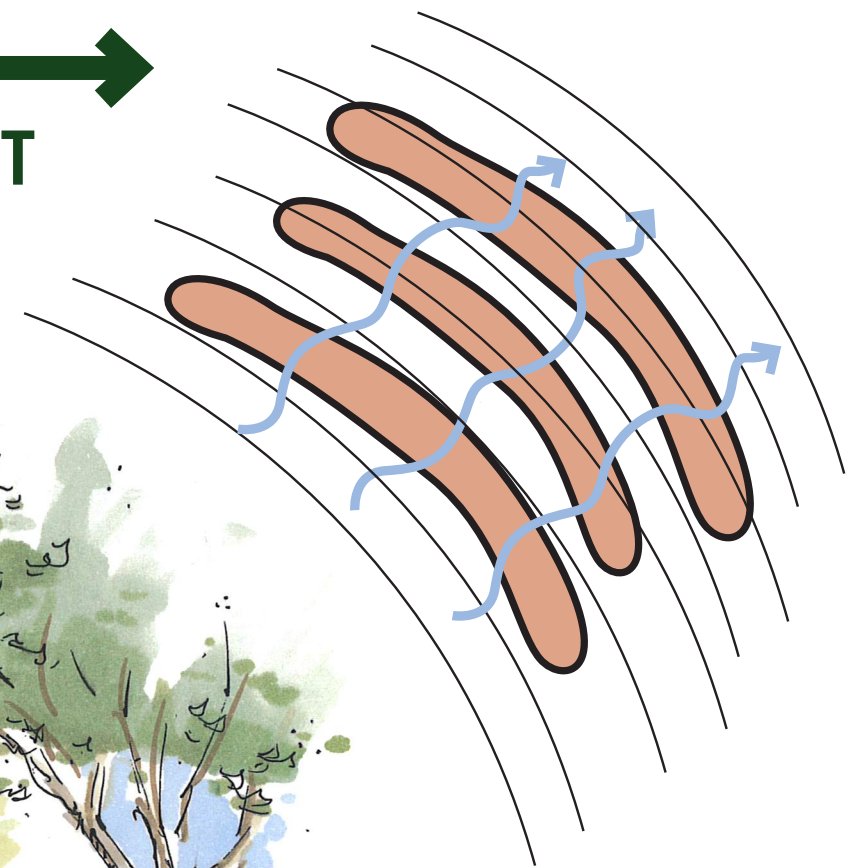


FOOD FOREST

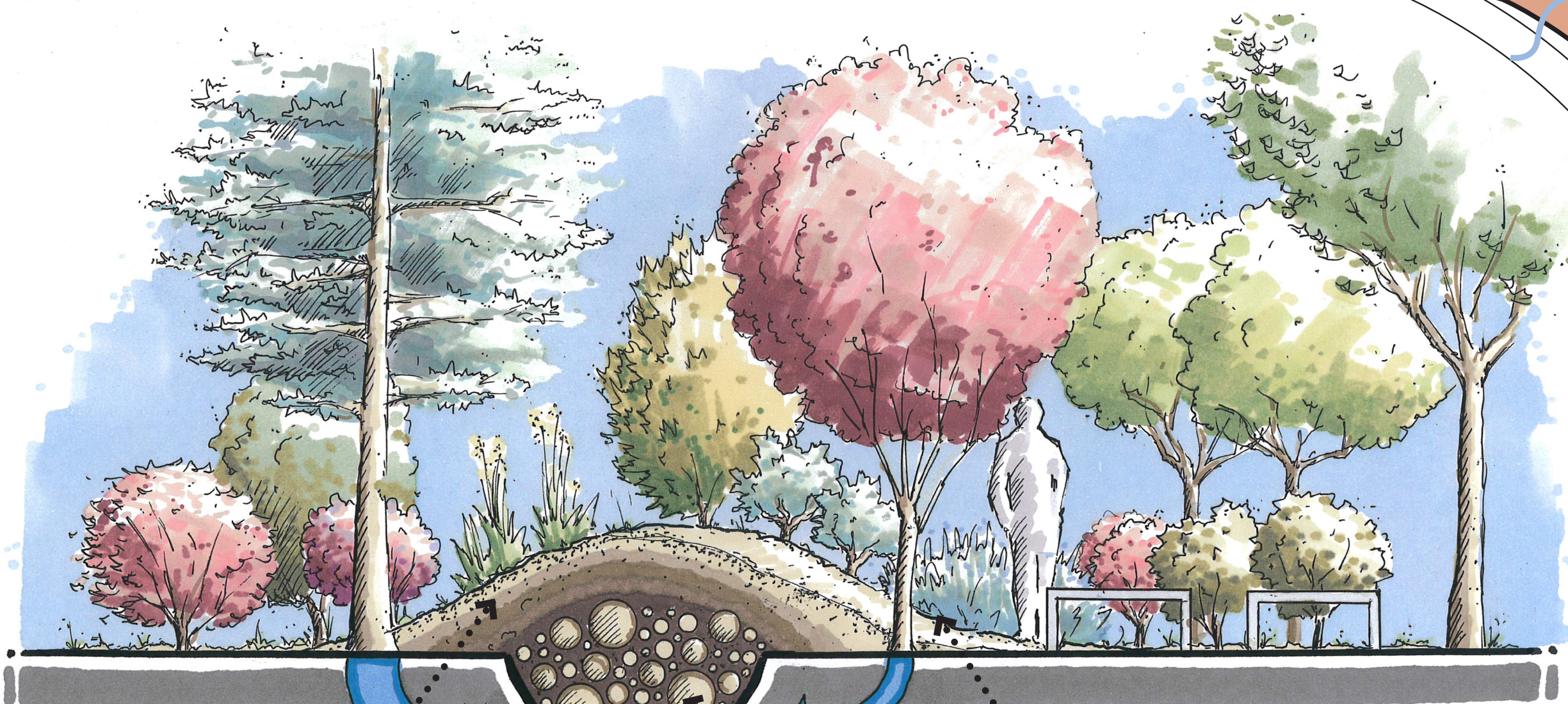


HUGELCULTURE (HUGEL MOUNDS)

HOW TO
IMPLEMENT →



- Contours
- Flow of water
- Hugel Mound



WHAT ARE SOME OF THE BENEFITS?

- Mulch and soil layer to maintain soil moisture and provide base for plantings
- Trench captures runoff and aids in decomposition of organic material
- Microclimates on sides of mounds for high/low sun exposure plant needs
- Plant roots tap into system, require less water
- Various sized sticks, twigs, and logs decompose at different rates
- Creates dense, nutrient rich, moist "sponge" for nearby plants to tap into
- Can help plant species establish themselves and thrive in drier climates such as Utah
- Aids in soil formation and development of relationships between plants, bacteria, fungi, and other organisms