

Improving Utah's Water Quality

Fremont River Watershed



Revised November 2012

MAJOR WATERBODIES

Johnson Valley Reservoir
Forsyth Reservoir
Mill Meadow Reservoir
Fish Lake
Fremont River
Dirty Devil River

MAJOR CITIES

Loa
Bicknell
Torrey

MAJOR LAND USES

Agriculture
Recreation
Rangeland

LOCAL WATER QUALITY ISSUES

Nutrients
Sediment
Stream bank erosion
Salinity

LOCAL CONTACT:

Fremont River
Conservation District
Watershed Coordinator
340 North 600 East
Richfield, UT 84701
(435) 896-8566

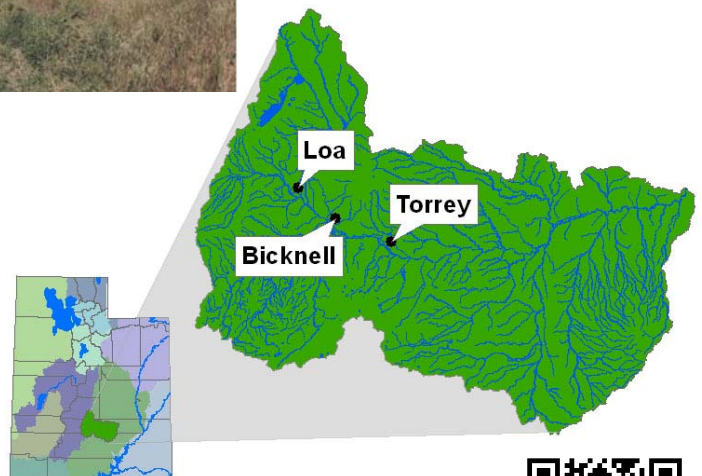
Watershed Description:

The Fremont River watershed is located in Wayne County. The watershed headwaters, lakes, and streams are located in the Fish Lake National Forest, which includes the sixth highest mountain in Utah. The watershed is composed of high mountains and valleys.

The population of Wayne County is estimated to be 3,000 and the majority of the population works in agriculture industries. The primary land uses are associated with livestock production, including grazing. Approximately 5% of the land in Wayne County is privately owned, 12% is administered by the state of Utah, and 83% is administered by either the Bureau of Land Management, U.S. Forest Service, or the National Park Service. The watershed contains approximately 16,000 acres of irrigated lands, and 70,000 acres of private and state rangelands. The remaining acres



are federally administered public lands. The watershed contains lands that are popular sightseeing sites due to their prehistoric ancestry. Other recreation activities include fishing, hunting, and camping.



Fremont River Water Quality Improvement

Project Description:

The Fremont River water quality improvement project was launched with the formation of a local steering committee to oversee the development of the "Fremont River Watershed Water Quality Management Plan." This plan was completed in March 2002. To date, 1.5 miles of stream have been restored with another 1.5 miles projected to be completed by spring 2009. These stream restoration projects focus on re-contouring stream banks, installing in-stream rock structures, and planting riparian vegetation to improve water quality. In addition to stream restoration, landowners have voluntarily installed many other conservation and best management practices such as the relocation of animal feeding operations, implementing sprinkler irrigation systems to eliminate irrigation return flows to the river, and riparian fencing. These practices help control erosion and reduce runoff of sediment and nutrients into the Fremont River.



Partners

Wayne County
Fremont River Conservation District
Local landowners
Utah Division of Water Quality
Utah State University Extension
Utah Association of Conservation Districts
Utah Dept of Ag and Food
Fishlake National Forest Service
Utah Division of Wildlife Resources
Natural Resources Conservation Service
Farm Service Agency
Environmental Protection Agency

Related Projects

Stream restoration
Range and pasture planting
Irrigation systems efficiency
Aquifer classification
Water quality monitoring programs

Funding

Total (through 2008) \$750,000

For funding opportunities in the Fremont River Watershed, contact the Fremont River Conservation District.

To learn how you can participate or lend your support to Utah community water quality projects, please contact your local conservation district or county agent.

Produced by USU Water Quality Extension, Utah Watershed Coordinating Council, Utah Association of Conservation Districts, and Utah Division of Water Quality.

Utah State University is committed to providing an environment free from harassment and other forms of illegal discrimination based on race, color, religion, sex, national origin, age (40 and older), disability, and veteran's status. USU's policy also prohibits discrimination on the basis of sexual orientation in employment and academic related practices and decisions. Utah State University employees and students cannot, because of race, color, religion, sex, national origin, age, disability, or veteran's status, refuse to hire; discharge; promote; demote; terminate; discriminate in compensation; or discriminate regarding terms, privileges, or conditions of employment, against any person otherwise qualified. Employees and students also cannot discriminate in the classroom, residence halls, or in on/off campus, USU-sponsored events and activities. This publication is issued in furtherance of Cooperative Extension work, acts of May 8 and June 30, 1914, in cooperation with the U.S. Department of Agriculture, Noelle E. Cockett, Vice President for Extension and Agriculture, Utah State University.