

Freshwater Phytoplankton ID SHEET

TARGET ALGAE



Anabaena spp.



Credit: GreenWater Laboratories/CyanoLab

Anabaena spp.



Credit: GreenWater Laboratories/CyanoLab

Cylindrospermopsis spp.

Straight morphotype



Cylindrospermopsis spp.

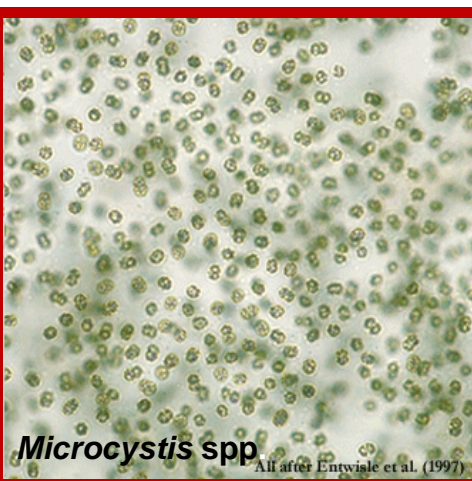
Curved morphotype



Microcystis spp.



Microcystis spp.



Aphanizomenon spp.



Notes about Aphanizomenon:

Toxin: Saxitoxin N-fixation: Yes
Cyanophyta – Cyanophyceae – Nostocales
4 described species

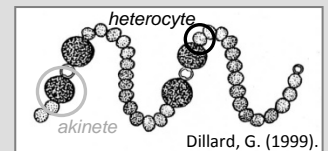
Trichomes solitary or gathered in small or large fascicles (clusters) with trichomes arranged in parallel layers.



Notes about Anabaena:

Toxin: Anatoxin-a N-fixation: Yes
Cyanophyta – Cyanophyceae – Nostocales
More than 80 known species

Trichomes are straight, curved or coiled, in some species with mucilaginous colorless envelopes, mat forming.



Notes about Cylindrospermopsis:

Toxin: Cylindrospermopsin N-fixation: Yes
Cyanophyta – Cyanophyceae – Nostocales
Around 10 known species

Trichomes are straight, bent or spirally coiled. Cells are cylindrical or barrel-shaped pale blue-green or yellowish, with aerotypes. Heterocytes and akinetes are terminal.



Notes about Microcystis:

Toxin: Microcystin N-fixation: No
Cyanophyta – Cyanophyceae – Chroococcales
Around 25 known species

Colonies are irregular, cloud-like with hollow spaces and sometimes with a well developed outer margin. Cells are spherical with may aerotypes.

