

Parker Mountain Adaptive Resource Management (PARM) Sage-grouse Local Working Group

The Parker Mountain Adaptive Resource Management Plan (PARM) Sage-grouse Local Working Group (LWG) was organized in 1997 by Terry Messmer. PARM consists of state and federal agency personnel, representatives from local government, non-profit organizations, academic institutions, private industry, and private individuals. This LWG is currently facilitated by Dave Dahlgren.

Description of Area and General Population Information

The PARM LWG area covers portions of Garfield, Piute, and Wayne Counties that contain occupied sage-grouse habitats. Sage-grouse habitat in this area is well connected and the majority of the sage-grouse can be found on the Awapa and Aquarius plateaus. It is broken down into three sub regions; the Parker, Fish Lake, and Grass Valley. See <http://utahcbcp.org/files/uploads/parm/PARMfml-10-06-web.pdf> for maps and figures. The sage-grouse populations at Wildcat Knoll and Horn Mountain have been included with the Parker Mountain Sage-grouse Management Area. The stakeholders (e.g., U.S. Forest Service [USFS], Emery County, etc.) working on these two populations have joined PARM.

The PARM area has been the most studied population of sage-grouse in Utah going back to 1998 and there have been several publications made available through these research efforts in addition to annual reports. See <http://utahcbcp.org/htm/groups/parkermountain> for more information. The Wildcat Knoll and Horn Mountain had two years of research with radio-marked grouse from 2008-2009.

Recent Activities and Accomplishments

The PARM group has been meeting regularly. The Mytoge Mountain conifer removal project has been one of the most significant activities this past year. The USFS is leading this effort. The primary objective is to benefit sagebrush conservation and sage-grouse in the area. The Utah Community-Based Conservation Program has put several (up to 5) GPS radios on grouse that have been using the general area of the Mytoge Mountain project (Figure 6).

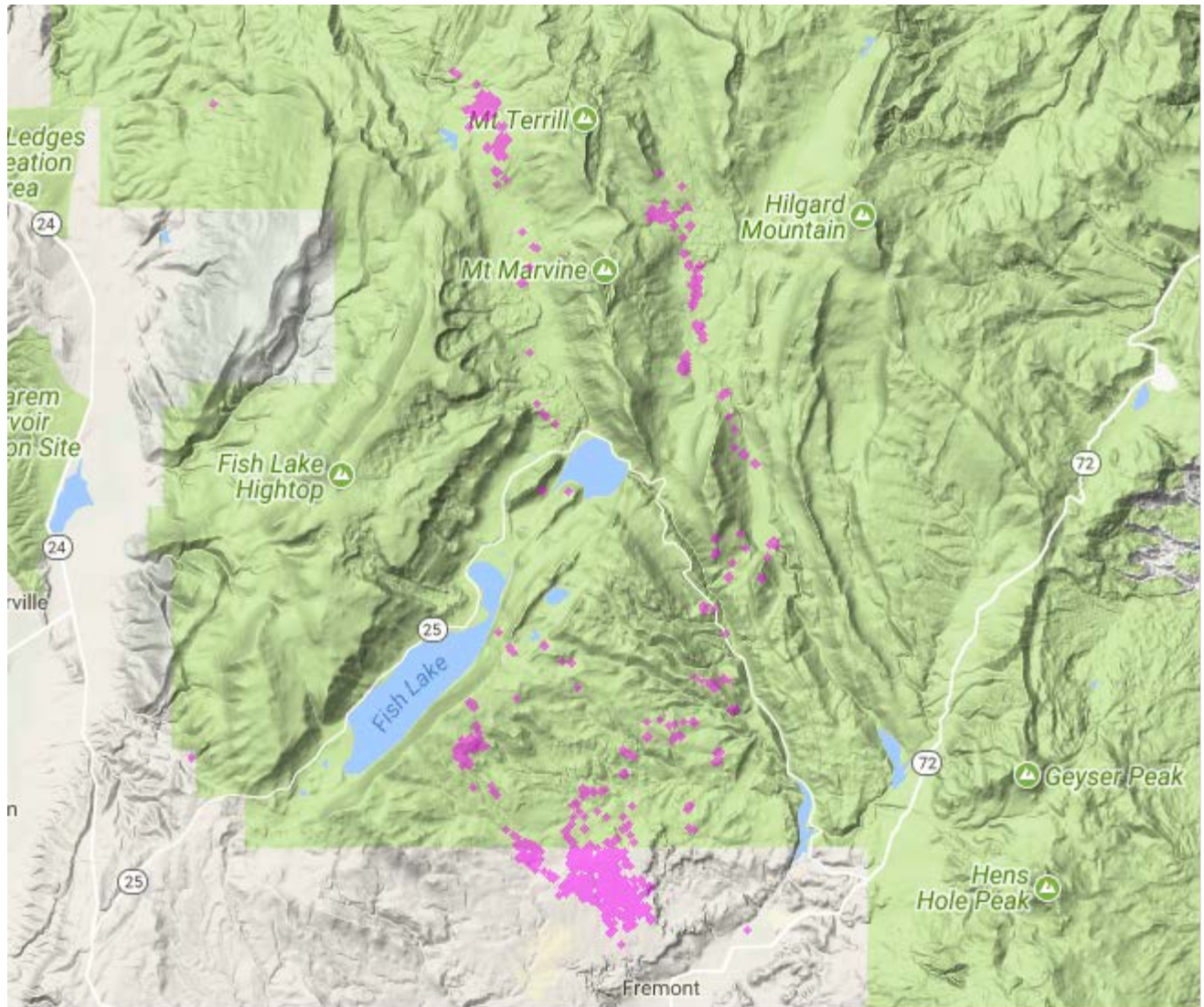


Figure 6. Map of GPS-PTT radio-marked female greater sage-grouse (*Centrocercus urophasianus*; sage-grouse) from the Dog Flat Lek within the Mytoge Mountain Project Area. Of note is the movements of a couple female grouse to the north up the UM Creek and Seven Mile Creek drainages. Please note these points represent a very small portion of the population, thus, these locations do not necessarily represent the population as a whole.

Upcoming Year Work Plan

PARM members continue to collect sage-grouse lek information by meeting one morning in the Spring where group members gather to count all the leks in the Parker Mountain Area during the same morning. Our cheatgrass treatment project has been completed in the Red Knoll area, with post-treatment vegetation surveys in September 2017. These surveys showed that cheatgrass was drastically reduced within the treatment areas. We were unable to get a second treatment last fall though. We will have one more vegetation survey conducted in the early summer to see where we need to go from here.