



Waxed Canvas Utility Apron

USU Clothing and Textile Training 2026

MATERIALS NEEDED

- Waxed canvas (16.5" x 24")
- 1" webbing (cotton or nylon)
- 1" binding tape (cotton)
- 1" buckle (side release, adjustable; or your choice)
- Ruler
- Scissors

CUTTING INSTRUCTIONS

Binding Tape

- (1) 26" (top of pocket)
- (2) 11" (two sides)

Webbing

- (1) 5 1/2"
- (1) enough to wrap around waist



ASSEMBLY INSTRUCTIONS

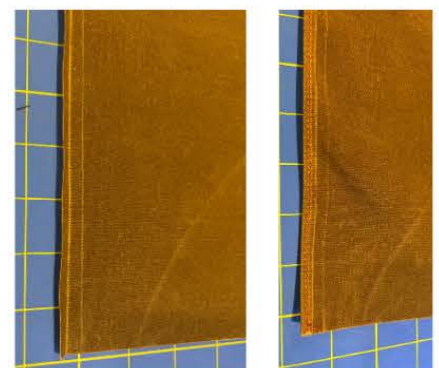
Note: while fabric does have "wrong" and "right" side, it is difficult to tell and thus is not crucial to differentiate



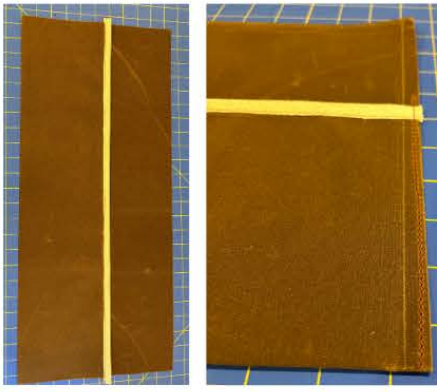
1. Mark lightly with scissors at 6" from bottom along the length of the fabric on right side. The edge of the fabric (bottom as shown here) will be the top of the front pocket.
OPTIONAL: in the 6" marked area, add pockets or other decorations.



2. Sew on bias tape lengthwise on edge of fabric in the 6" marked area. On right side of fabric, score lengthwise at 3/8", pin, fold binding to back, and clip or pin. Top stitch near interface of binding and waxed canvas.



3. On raw edge of 24" length, use ruler to mark 1/2" lengthwise on right side of fabric. Mark lightly with scissors. Fold raw edge to this mark and topstitch.



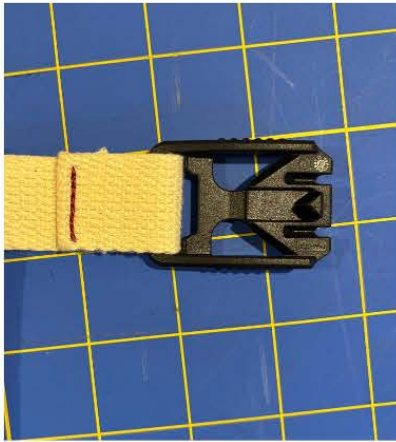
4. Fold up edge with bias tape, creasing along 6" line. Baste sides at 1/8".



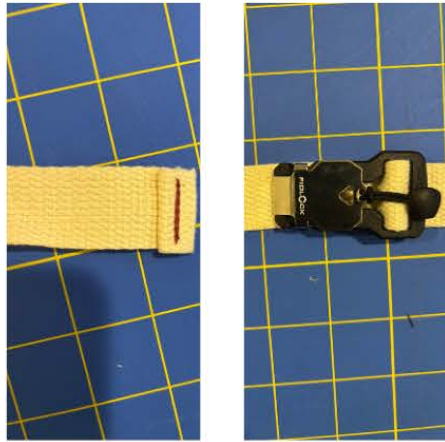
5. Pin on bias tape to both sides of the apron edge, covering the basting stitch.



6. Topstitch the bias tape on the sides, double folding at the ends to cover raw edge of tape.



7. With the short piece of webbing, loop it through the receiving end of the buckle, turn the raw edge under, and stitch to itself with at least 3 passes.



8. With long piece of webbing, loop one end through the other piece of the buckle, turn the raw edge under twice, and stitch with at least 3 passes



9. Fold top of apron to the back, 1 1/4". Slide raw edges of both webbing pieces into opposite sides of the apron. Sew Box X on each side of the apron to secure raw edge of webbing inside of folded top.



10. Topstitch along the top of the apron.



11. From bottom of apron, sew straight lines to top of pocket to create desired number of separate spaces. Stitch 3-4 times over bias-taped top of pocket. OPTIONAL: include rivets to reinforce high use areas.