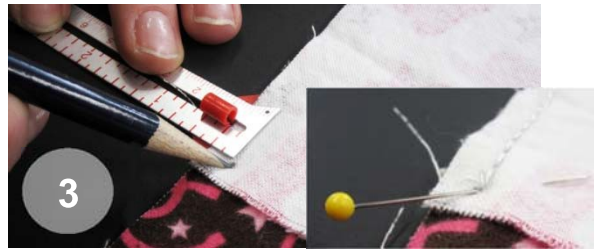


Step #3: Create Stop Points

- On the smaller piece of fabric, mark $\frac{1}{4}$ " from each side at the corner and place a pin for a "stop point." Do so for both corners along the side you are pinning.
- Sew a $\frac{1}{4}$ " seam from one stop point to the other.
- Repeat for the opposite side (match centers, pin stop points, and sew).



Stop Points: sew **to** it, not through it!

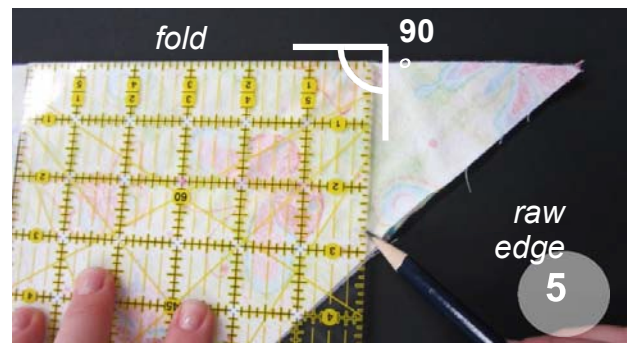
Step #4: Sew Remaining Seams

- Repeat (match centers, pin stop points, and sew) on the last two sides, leaving a 6" opening in the middle of one side for turning.
- There will be excess material at each corner once all of the sides have been sewn.

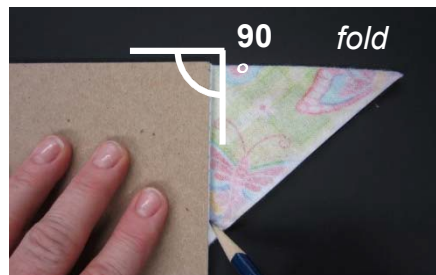


Step #5: Miter Corners

- Holding the corner, fold the blanket so the two seam edges meet.
- Mark a line at a 90° angle from the **fold** to the stop point.
- Stitch along this line. Trim all but $\frac{1}{4}$ " of the excess.
- Repeat for each corner.



Tip: You don't even need a ruler for this step. Simply use the corner of a sheet of paper. Align with the **fold**, *not* the raw edge.



Step #6: Press and Turn

- Lay the blanket out flat, small piece on top. Notice that the back panel folds over the front.
- Press the seams toward the outside edges.
- Turn the blanket right side out through the gap.
- Use a pin or point turner to square the corners.

Step #7: Finish

- Lay the blanket flat so the border is an equal width on all sides.
- Pin around the blanket at the seams and at the opening where you turned the blanket- being careful to fold the seam allowance under.
- Press the blanket flat, then top stitch around the blanket by the seam edge (on border side of seam).

