

CONCEPT 1

1 Compact Gravel Path



<https://www.apieceofrainbow.com/25-garden-path-ideas/>

4 Mulch Flower Beds



<https://thehorticult.com/10-favorite-plants-california-native-plant-tour/>

2 Elevated Garden Bed



<http://www.landscapeonline.com/research/article-a.php?number=15499>

5 Planter Bed



<https://carolynshadegardens.com/2012/07/14/row-your-way-to-color-with-annuals/>

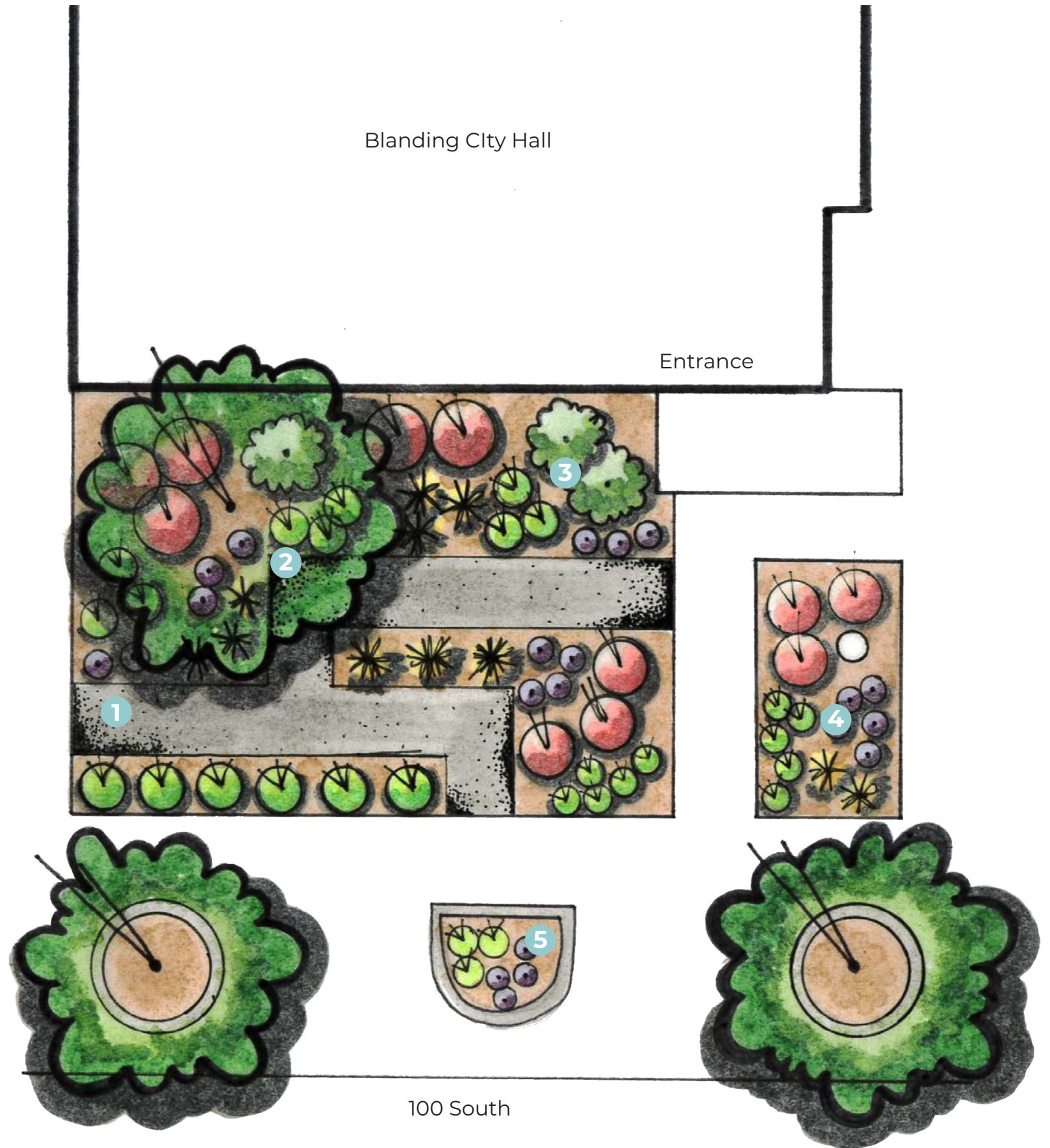
3 Information Signs



<https://info.plantsmap.com/help/how-customizable-are-plant-webpages-and-your-tags-signs/>

Notes:

- Compacted gravel path will provide access through out the site
- Elevated planter beds will add contrast to the relatively flat site
- Informational signs will help residents who visit to learn more about the benefits of the garden and how it could be implemented
- Planter in front could be used to show how annuals could be incorporated into the landscape



CONCEPT 2

1 Mulch Flower Beds



<https://www.pinterest.com/pin/106749453642894438/?lp=true>

4 Cacti Garden



<https://blog.gardenloversclub.com/ornamental/cactus-garden-ideas/>

2 Large Rocks



<https://antigaigreja.blogspot.com/2017/03/17-awesome-large-landscaping-rocks.html>

5 Planter Bed



<https://www.cityscapeslandscaping.com/photos/Annuals/24/25/>

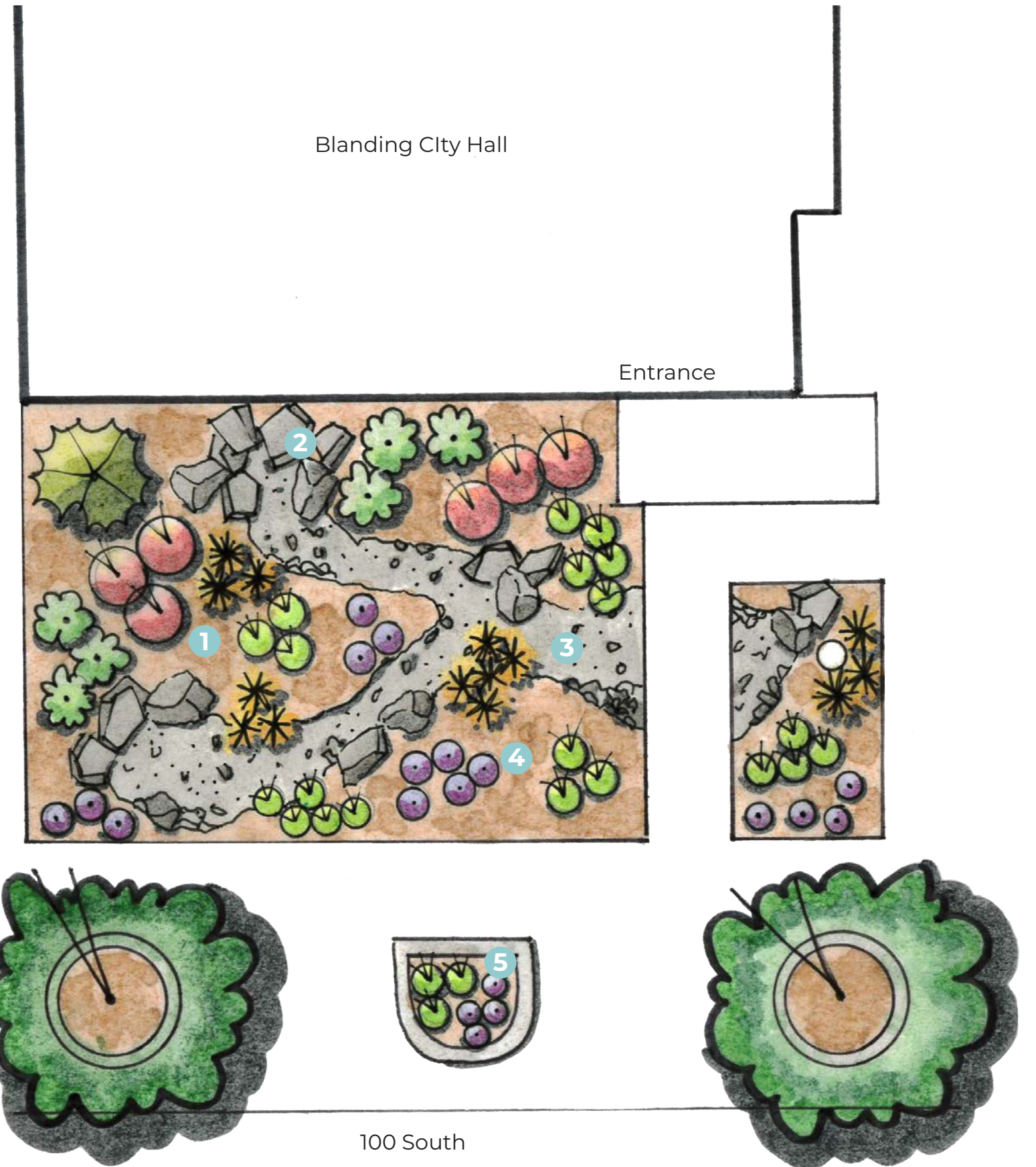
3 Dry River Bed



<https://www.owntheyard.com/dry-river-bed-landscaping-ideas/>

Notes:

- Dry river bed provides connectivity through out the site
- Dry river bed will collect rain water and will help to irrigate the plantings in the bed
- Lowest water option



CONCEPT 3

1 Tiered Planter



<https://www.baronlandscaping.com/photo-gallery/retaining-wall-pictures/>

4 Compact Gravel Path



<https://www.melissagarson.com/motivational-mondays-1/2018/6/4/the-path-to-happiness>

2 Seat Wall



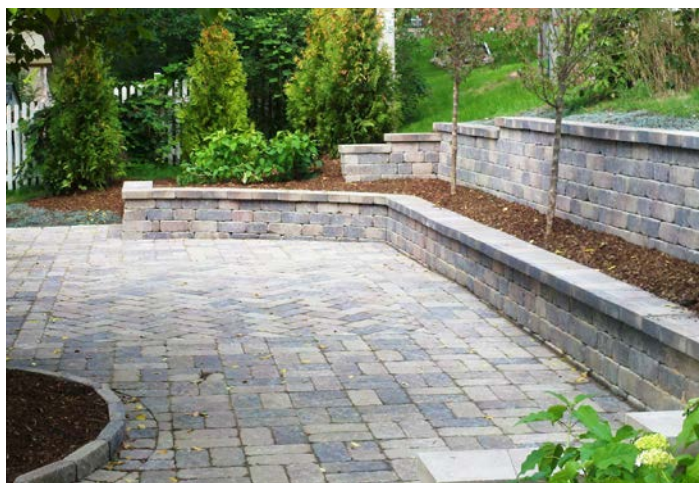
<http://rochesterpc.com/lakeland-seat-wall>

5 Low Water Grass



<https://www.latimes.com/home/la-hm-drought-grass-html-20150723-htmlstory.html>

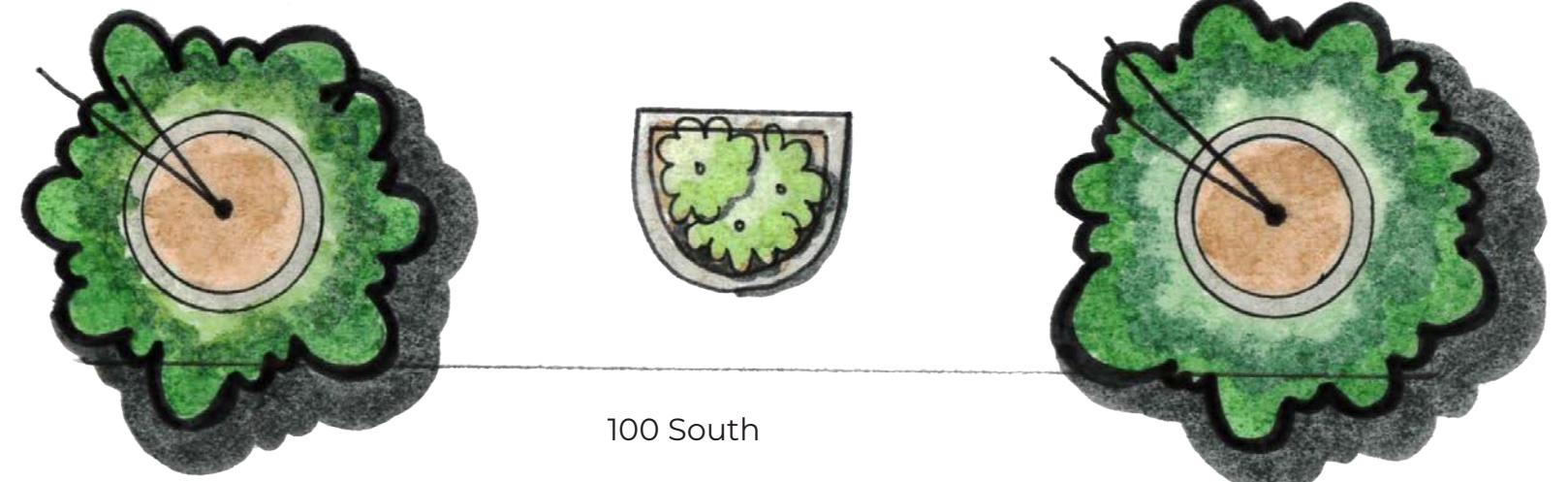
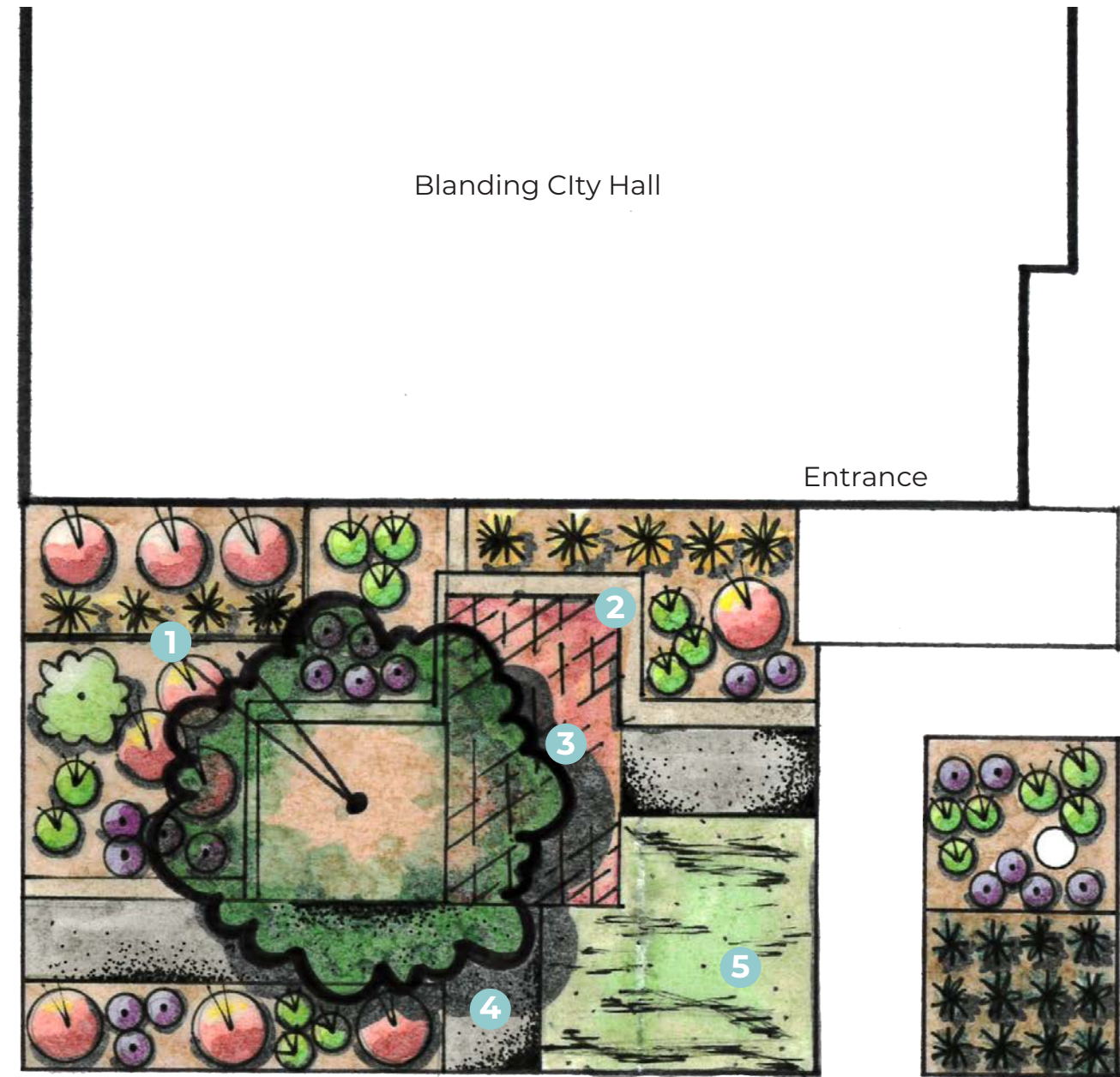
3 Small Plaza



<https://billwandsnider.wordpress.com/tag/bluestone/>

Notes:

- A small plaza provides an outdoor gathering area
- A seat wall will provide seating all the time with space for additional seating or tables to be added
- A small portion of grass can demonstrate how you can conserve water and retain a small amount of grass



CONCEPT 4

1 Stacked Rock Seating



<http://2minutegardener.blogspot.com/2011/05/photo-dry-stack-flagstone-seating-wall.html>

4 Variety of Low Water Grass Options



<https://archive.sitrib.com/article.php?id=3875209&itype=CMSID#gallery-carousel-446996>

2 Wagon Wheel Sculpture



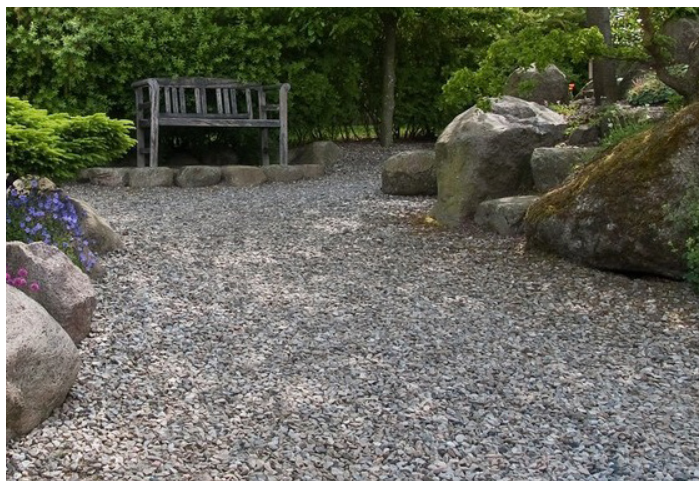
<https://www.pinterest.com/pin/155092780895088098/?lp=true>

5 Bunch Grass Lawn Option



<http://content.yardmap.org/learn/native-grasses-for-your-native-lawn/>

3 Gravel Plaza



<https://www.pinterest.com/pin/155092780895088098/?lp=true>

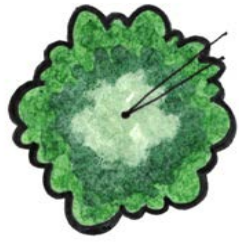
Notes:

- Stacked rock seat wall points in the direction of Hole in the Rock. The wall would step up every few feet to represent the journey the pioneers took
- The wagon wheel sculpture would stand as a tribute to the pioneer heritage of the city
- Panels of grass in front will show multiple options for low water turf that residents could use



PLANT PALETTE

Shade Tree



Green Ash



Golden Rain Tree



Box Elder Maple

Shrubs



Red Twig Dogwood



Mock Orange



Lavender



Winter fat



Threadleaf Sage

Perennial



Echinacea



Mexican Hat



Jupiter's Beard



Blanket Flower



Sunset Hyssop



Coreopsis



Utah Agave

Ornamental Grass



Indian Rice Grass



Purple Threawn



Karl Foerster



Blue Fescue

<https://www.pbase.com/lamg/image/112735803>
<https://www.jardins-du-monde.be/en/trees/22-panicled-goldenrain-tree.html>
<https://static1.squarespace.com/static/5c01e5ef3917ee735df13107/5c5c93666e9a7f7629cedfeb/5c65c03153450aa0c3a73892/1550172210739/dogwood.jpg>
<https://www.starkbros.com/images/dynamic/1704-960x960.jpg>
<https://blb8a220803734b566a6-60c6880df797657f0f703cid8681ff9.ssl.cf2.rackcdn.com/1378873710-lavender.JPG>
https://sierravistagrowers.net/sites/default/files/sage_sand300.jpg
https://www.whiteflowerfarm.com/mas_assets/cache/image/4/e/a/3/20131.jpg
[https://www.highcountrygardens.com/media/catalog/product/h/c/hcg-ratibida-columni-flora-82025-hr_1.jpg?quality=80&bg-color=255,255,255&fit=bounds&height=&width=https://cdn.webvanta.com/000000/51/74/sm/uploads/plant/1485896831-78cc09b7664b-b6ab4/Utah%20agave%20\(Agave%20utahensis\).jpg](https://www.highcountrygardens.com/media/catalog/product/h/c/hcg-ratibida-columni-flora-82025-hr_1.jpg?quality=80&bg-color=255,255,255&fit=bounds&height=&width=https://cdn.webvanta.com/000000/51/74/sm/uploads/plant/1485896831-78cc09b7664b-b6ab4/Utah%20agave%20(Agave%20utahensis).jpg)
<https://www.heritageflowerfarm.com/wp-content/uploads/2017/12/Coreopsis-vert.jpg>
<https://wgsinc.ca/wp-content/uploads/2016/03/blanket-flower1.jpg>
<http://www.paynes.com/wp-content/uploads/2014/04/Centranthus-ruber-Red-TofC.jpg>
https://www.highcountrygardens.com/media/catalog/product/a/g/agastache-rupes-tris-glowing-embers_5.jpg?quality=80&bg-color=255,255,255&fit=bounds&height=&width=https://santafebotanicalgarden.org/Wp2015/wp-content/uploads/Oryzopsis-hymenoides-Indian-rice-grass-growth-habit-Janice-Tucker-790x1024.jpg
<https://inlandvalleygardenplanner.org/wp-content/uploads/2017/02/21142653/Aristida-purpurea-1-of-2-819x1024.jpg>
<https://cdn.nexternal.com/romence/images/WG-Calamagrostis-KarlFoerster-main.jpg>
https://cdn.webvanta.com/000000/51/74/slider_detail/uploads/plant/1429711693-6c3885932804133f2/28263635_m.jpg