



The Western Aspen Alliance: Promoting Sustainable Aspen Ecosystems

Aspen Webinar, Feb. 22, 2012



P.C. Rogers, D.L. Bartos, R.J. Ryel
Utah State University & USFS, Rocky Mtn. Res. Station

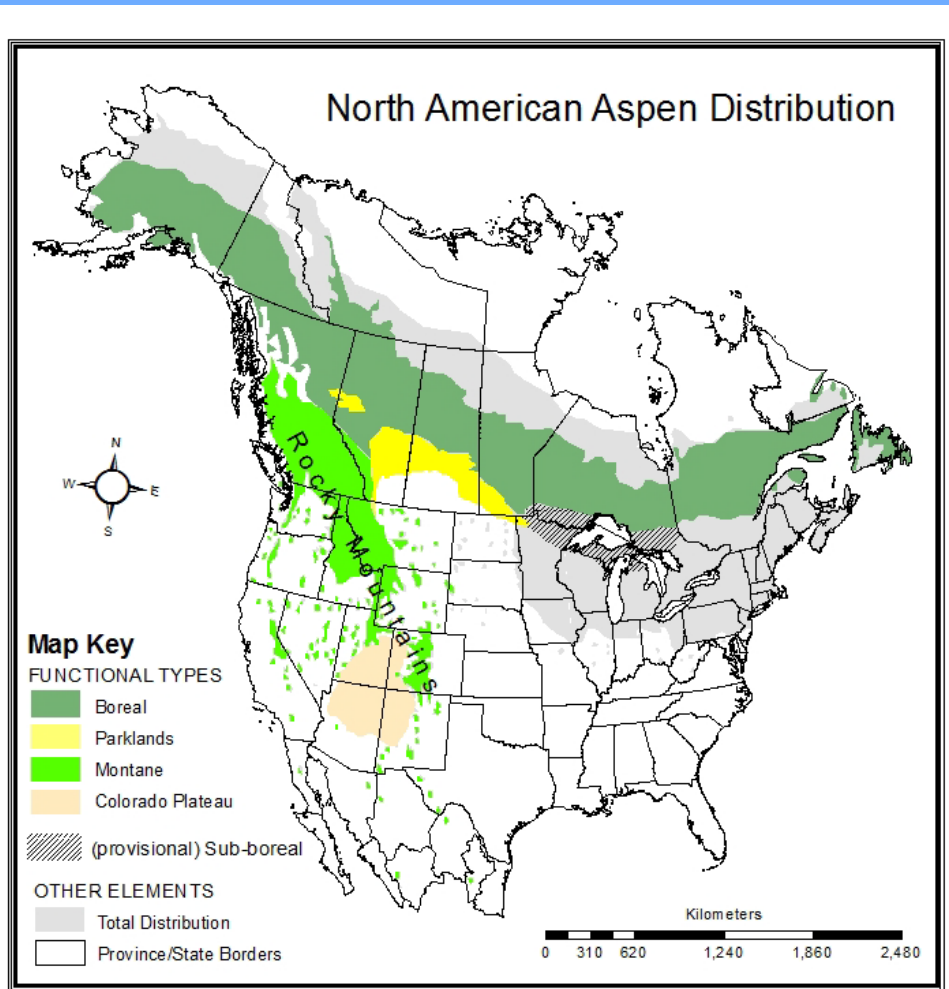


Outline

1. Aspen ecology refresher
2. Why the WAA now?
3. How the WAA works
4. Issues highlights
5. Summary

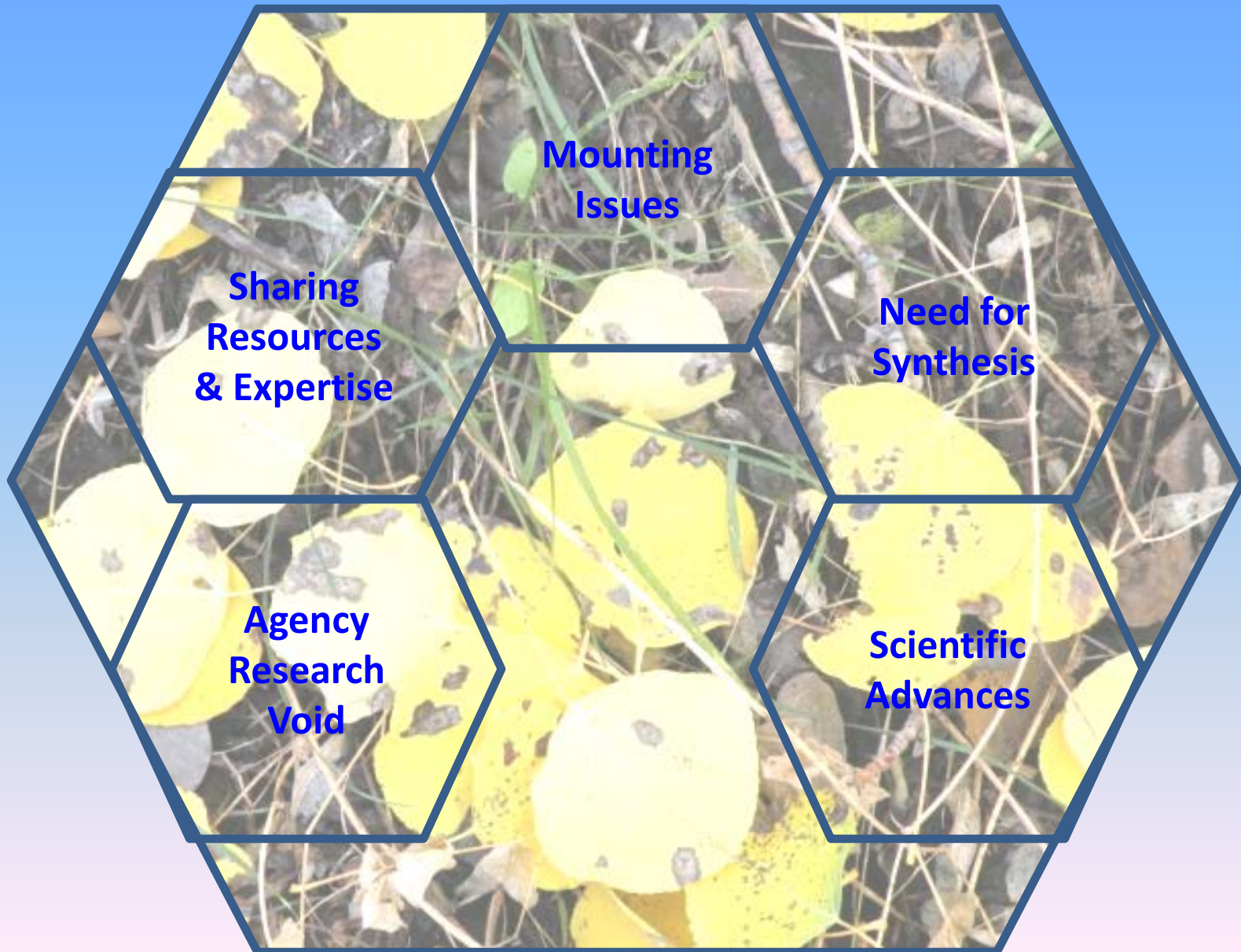


Aspen Ecology Refresher



- Widespread
- Clonal nature
- The “flutter”
- ‘Thin skinned’
- Colonizer
- Disturbance dependent
- Biodiversity & moisture oases
- Aesthetic value

Why the WAA now?



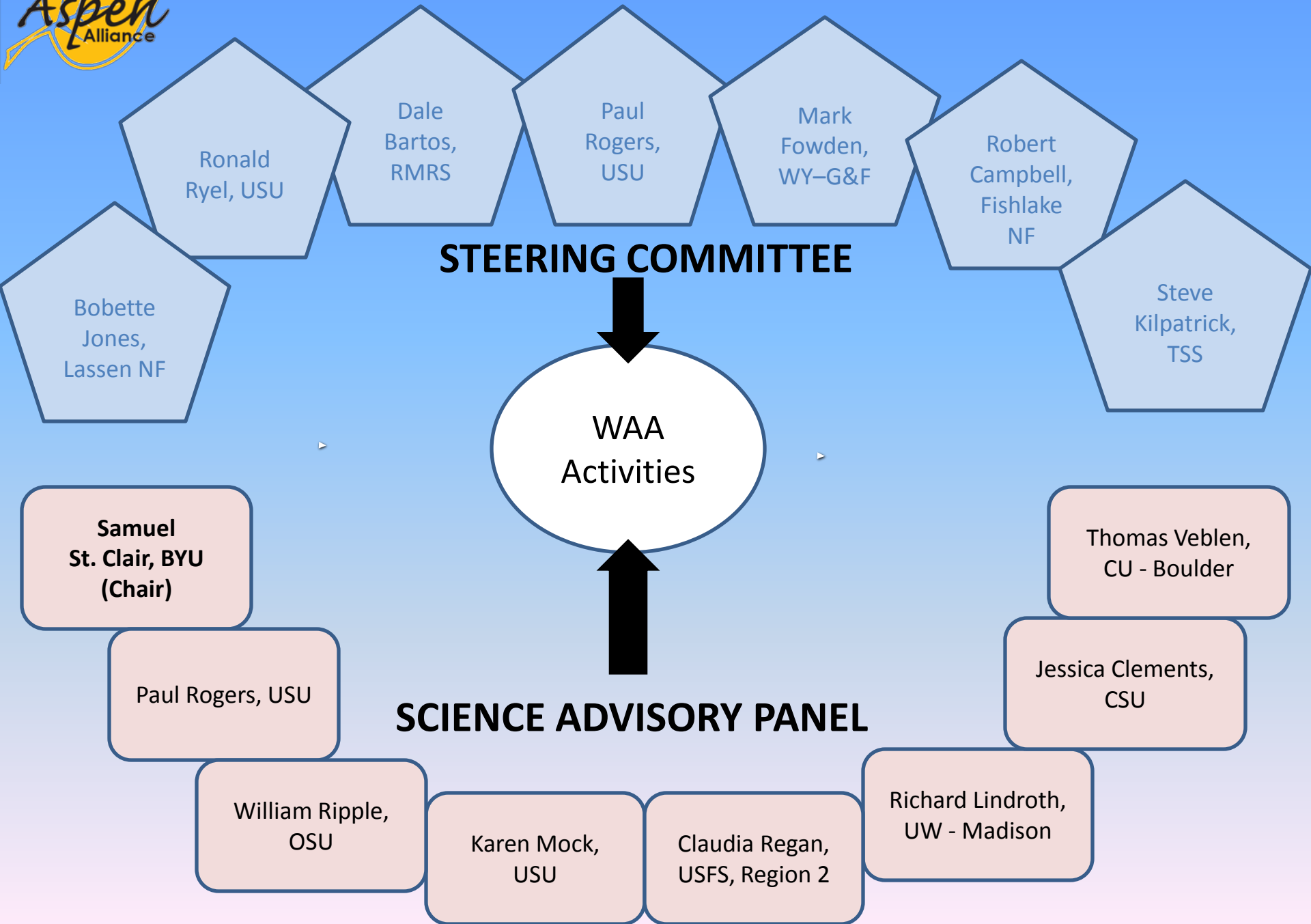
Why the WAA now?

“Our goal is to facilitate cooperative research and disseminate state-of-the-science aspen information to managers, researchers, the public, and other entities.”





How the WAA works



How the WAA works

WAA Activities



Research

Study Design &
Consultation

Conferences &
Field Trips

Expertise
Database

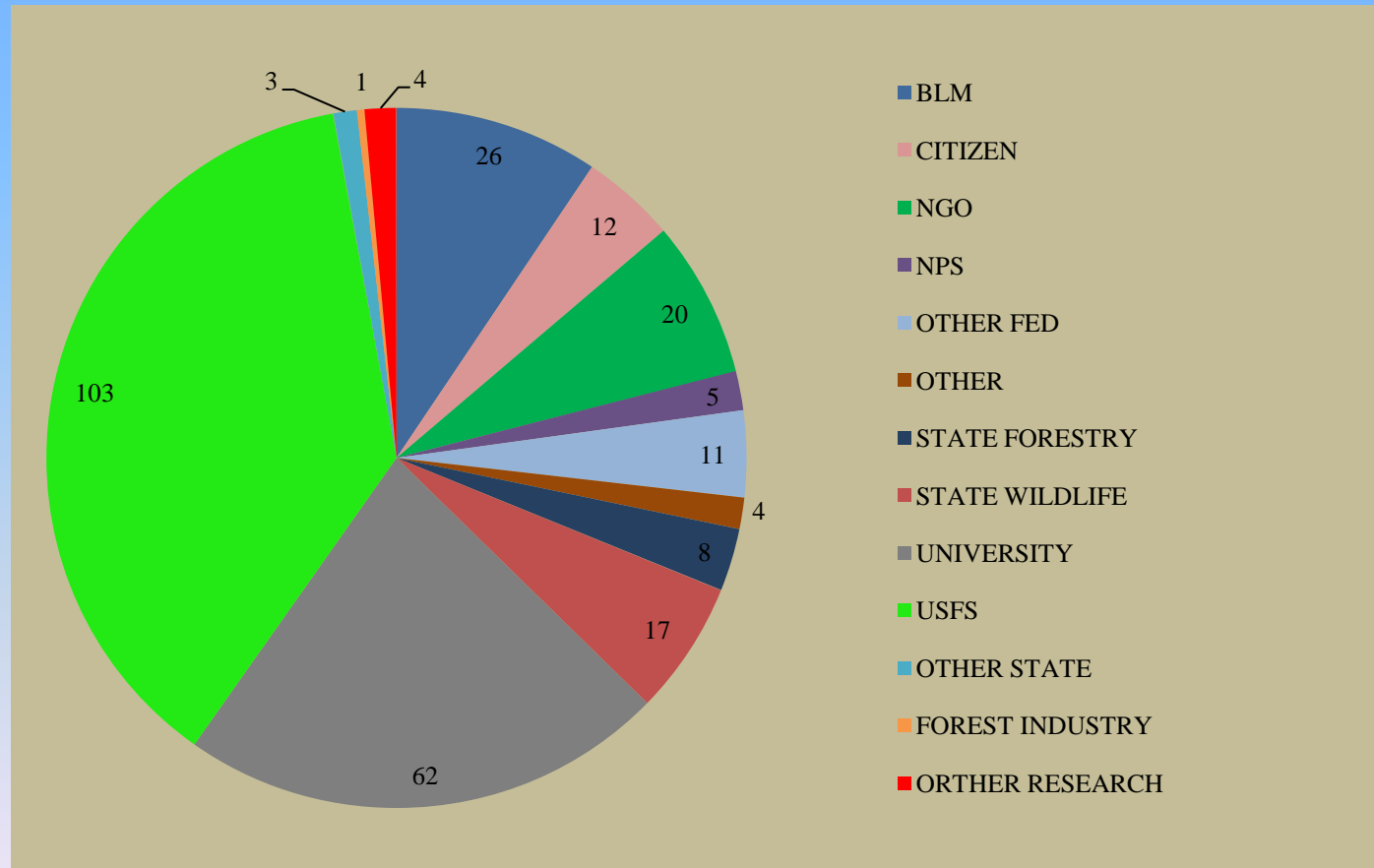
Literature
Searchers

Online Bibliography
(+7,000 records)



How the WAA works

A community of users:





Issues highlights

Sudden Aspen Decline (SAD)

2002



Photo: Seth Ohms

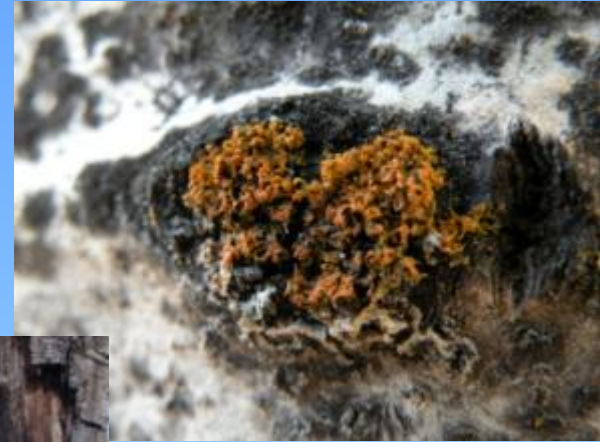
Water Storage & Retention





Tracking the issues

Biodiversity & Wildlife



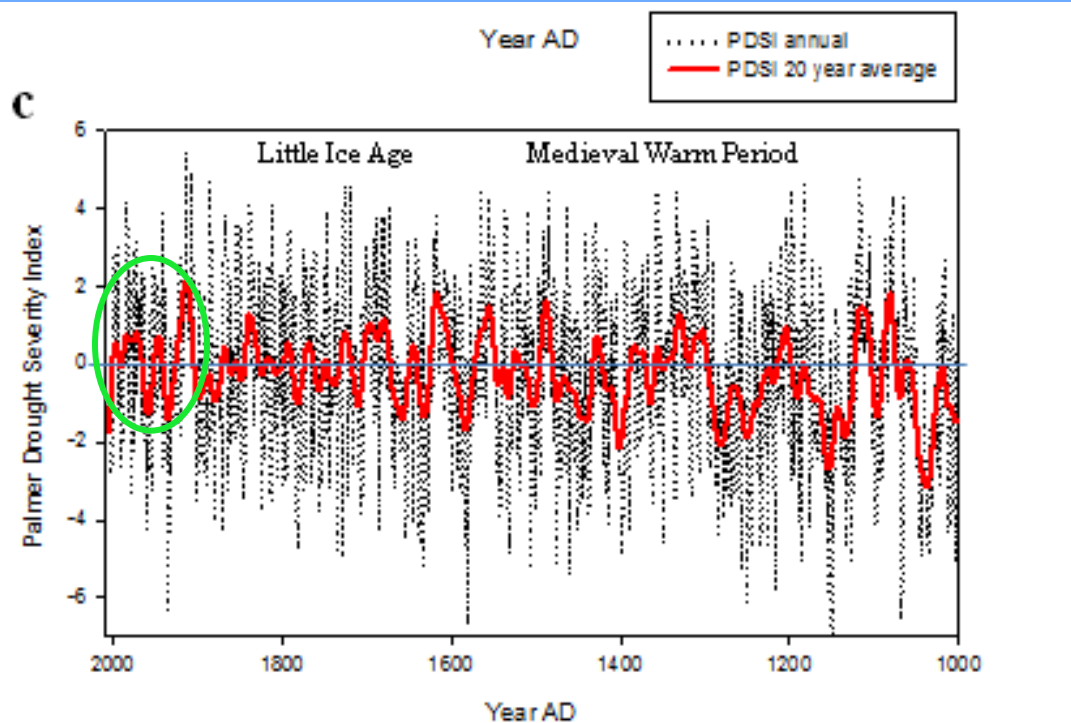


Tracking the issues

Limited Recruitment



Tracking the issues



Historic & Current Cover





Tracking the issues

Aspen Types (continental)

RIPARIAN



BOREAL



MONTANE



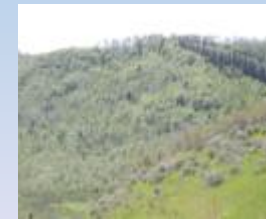
TERRAIN ISOLATED

- Tree associates
- Topography
- Stand size
- Precipitation
- Ecohydrology
- Rooting depth
- Regeneration type
- Dominant disturbance

PARKLANDS



COLORADO PLATEAU



ELEVATION/ ASPECT



Tracking the issues

Social & Economic Issues



Hunting
Forest products
Grazing
Water
Aesthetics

WUI Fire Breaks





Tracking the issues

Upcoming research:

Genetic advances

Niche modeling

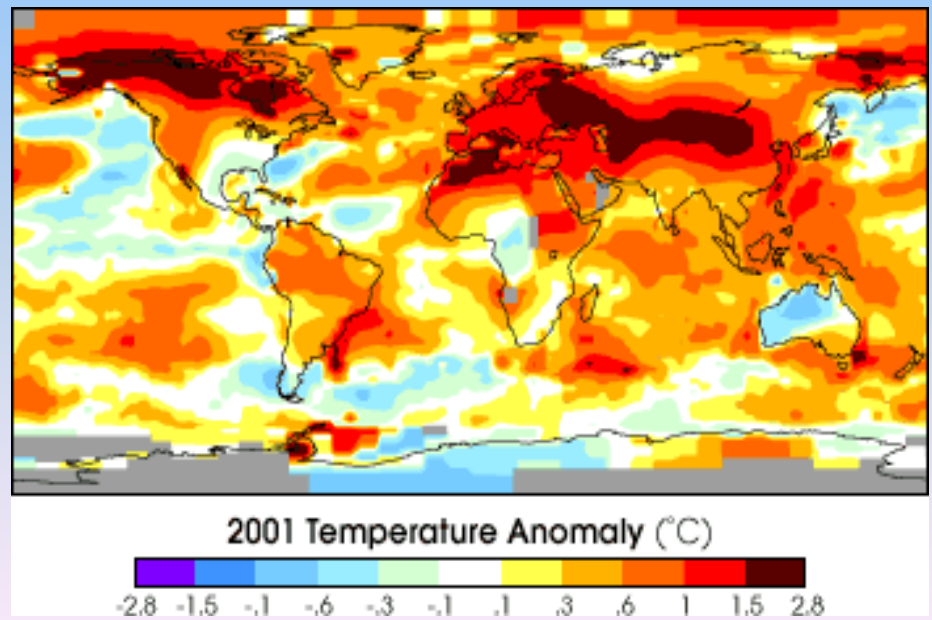
Climate/drought effects

Trophic cascades

Ozone & carbon inputs

Policy & decision-making

Recreation impacts



Summary



Communication: develop needs/expertise network, technology transfer, online literature, workshops/conferences, and publications.

Spatial Assessments: determine the geographic extent of Sudden Aspen Decline (SAD), seral/stable aspen stands, and historic aspen coverage.

Basic Research: stand structure, community composition, genetics, herbivory (wild/domestic), water yield, and biodiversity/trophic interactions issues.

Management/Monitoring: approaches to sustainability, developing aspen-specific monitoring protocols, and utilizing existing monitoring databases.

Social: catalog aspen resources, evaluate economic contributions and potentials, and assess value/use.

Webinar Partners



On the web: western-aspen-alliance.org