

Sociology, Social Work, & Anthropology

Applied and Engaged Work on Behalf of Utah
Citizens

* Leon Anderson, SSWA Dept. Head

Statewide Refugee Needs Assessment



- Funded by Utah Division of Workforce Services and completed in March 2015
- Research team of over 60 people (mostly students)
- Identified 11 different “literacies” that refugees must develop or otherwise be able to access
- Lorien Belton provided the day-to-day management and Steve Daniels supervised

Monroe Mountain Working Group



- Multi-party collaborative group begun in 2012.
- Range improvement project was the first step.
- The Final ROD was signed in December 2015, and lays out almost 50,000 acres of prescribed fire or thinning projects.
- Jody Gale and Kim Chapman voting members



United States
Department of
Agriculture

Forest
Service

August 2015



Draft Record of Decision

Monroe Mountain Aspen Ecosystems Restoration Project

Richfield Ranger District, Fishlake National Forest
Sevier and Piute Counties, Utah

Legal Description: Multiple sections in Ranges 1, 2, 2 1/2, and 3 West and in Townships 24, 25, 26, 27, 28, and 29 South



Possible joint projects between county faculty and Steve Daniels?

- Developing community mediation programs
- Offering the *Effective Professional and Interpersonal Communication* curriculum (4 half-day) sessions
- Developing and offering a financial management for non-profit organizations curriculum
- Repeating the *Successful Academic Publishing Workshop* (an in-service training for Extension faculty)

2016 Statewide Utah Angler Survey

- Funded by Utah Division of Wildlife Resources, July 1, 2015 through June 30, 2017
- The sixth in a series of similar projects conducted by USU researchers for DWR, on approximately five-year intervals dating back to 1986
- Dr. Richard Krannich (Professor of Sociology) as Project PI; assisted by graduate students from both the Sociology and Environment & Society programs



2016 Statewide Utah Angler Survey



Two separate Internet-based surveys efforts:

- 1). Series of 12 “monthly activity surveys” (January 2016 through December 2016)
 - 12 separate random samples of 5,000 adults licensed to fish in Utah; combined year-long sample size of 60,000
 - Designed to measure levels of fishing activity; locations of fishing activity; types of fish caught; catch rates; harvest rates; trip satisfaction; angler demographics

- 2). “Attitudinal” survey of randomly-sampled license purchasers
 - Fall, 2016 survey of 10,000 randomly-sampled license purchasers
 - Designed to measure satisfaction with fishing experiences; fish species preferences; preferred fishing methods and locations; angler motivations; barriers to fishing participation; attitudes and knowledge regarding a variety of fisheries management issues

2016 Statewide Utah Angler Survey

- Project addresses important “human dimensions” aspects of natural resource management
- Provides Utah DWR with improved data to guide fisheries management efforts
- Will help to identify segments of the angling population that exhibit distinct fishing activity patterns, and who have differing preferences and priorities regarding fisheries resources and recreational fishing experiences
- Results will assist DWR in management decisions and marketing efforts; will also assist Natural Resource/Wildlife Extension personnel in understanding the characteristics of key angler constituency groups and their unique interests and preferences



Courtney Flint UAES UTA01154
Integrating Water Knowledge to Assess Vulnerability in the Intermountain West



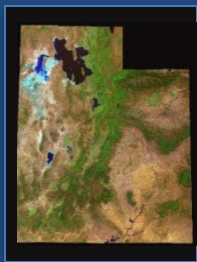
Statewide Research

- Tracking Storm Events and Water Quality Incidents 1997-2015
 - Collaboration with UT-DWQ
 - Hazard Mapping
 - Integration with Local Adaptive Capacity Data
- Tracking Water Coverage in Utah & Idaho Newspapers 2012-2015
 - Rural-Urban Variation
 - Framing Water Vulnerabilities

Local-Regional Research

- Water Voices Project
 - Public Interviews and Digital Narratives (Logan & SLC)
 - Water Values & Vulnerabilities
- Wasatch Mtn Project
 - Key Informant Interviews in 9 Counties
 - Mountain Values & Vulnerabilities
- Community Water Management
 - Interviews on Key Issues in Local Water Management

Water Voices - Videos from Public Interviews Along the Logan River
<https://www.youtube.com/channel/UCZ2mXRrRVL2Bb6ovW346LZg>



Federally-Funded Collaborative Water Research



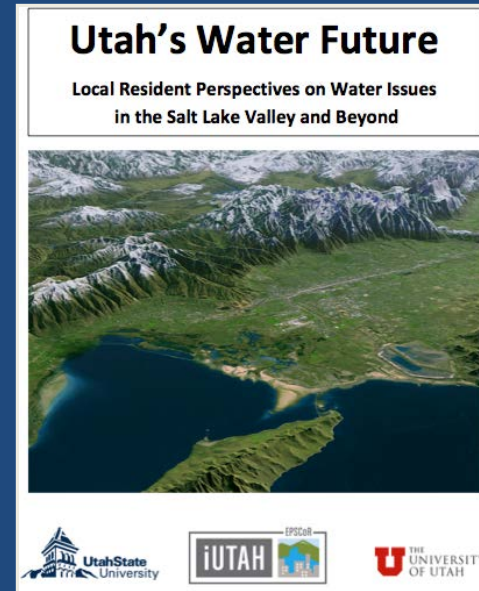
- **2014 WATER SURVEYS (iUTAH)**

- Households: 2,400 respondents (In 12 cities)
- Adults: 7,000 respondents from urban areas
- Studying links between:
 - Individual/household characteristics
 - Neighborhood/City type
 - Water perceptions, behaviors, attitudes

- **2015 IRRIGATION COMPANY SURVEY (USGS)**

- Surveyed members of 4 irrigation/canal companies
- Comparing farm vs. nonfarm members

- **Sharing results with key water system decision-makers (state agencies, cities, irrigation companies)**

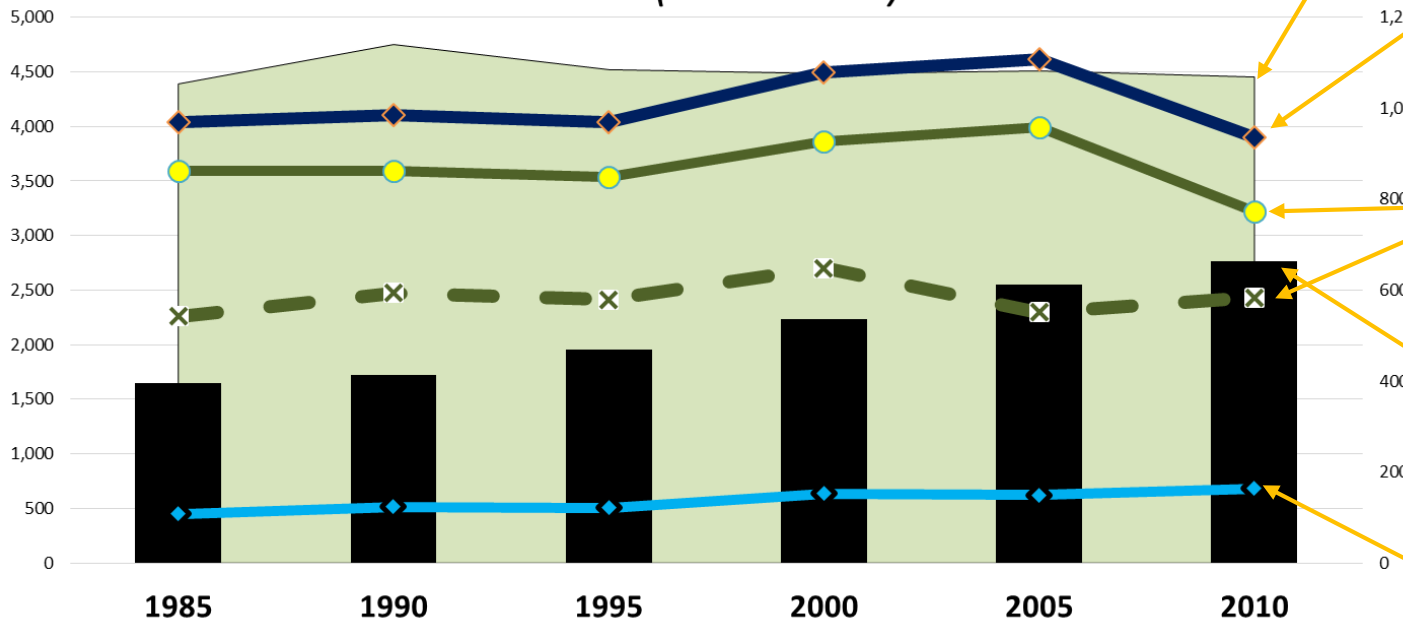


Douglas Jackson-Smith (UAES-1189) "Shifting Water Use and Management in Response to Land Use and Climate Change in the Intermountain West"



Core Q: How does conversion of irrigated agriculture to different forms of urban settlement affect water use?

TRENDS IN POPULATION, IRRIGATED FARMLAND, & WATER USE BY SECTOR UTAH (1985-2010)



IRRIGATED AG LANDS (unchanged)

TOTAL WATER USE Down 3% (-138 AF)

AG WATER USE +/- 10% (+ 171 or -370 AF)

POPULATION Up 68%

URBAN WATER USE Up 51% (+230 AF)

Extension Connections?

- Water
- Workforce and Migration
- Recreation
- Land use
- Health
- Family