

2021 Intermountain Tribal & Rural Opioid Wellness Summit

Bridging Harm Reduction and Recovery in Rural Communities



Opening Remarks

Dr. Sandra H. Sulzer



Utah State University®
EMMA ECCLES JONES COLLEGE OF EDUCATION & HUMAN SERVICES
DEPARTMENT OF KINESIOLOGY & HEALTH SCIENCE
COLLEGE OF HUMANITIES AND SOCIAL SCIENCES
EXTENSION

In partnership with

Utah Department of
Human Services
SUBSTANCE ABUSE AND MENTAL HEALTH



2021 Intermountain Tribal & Rural Opioid Wellness Summit

Bridging Harm Reduction and Recovery in Rural Communities

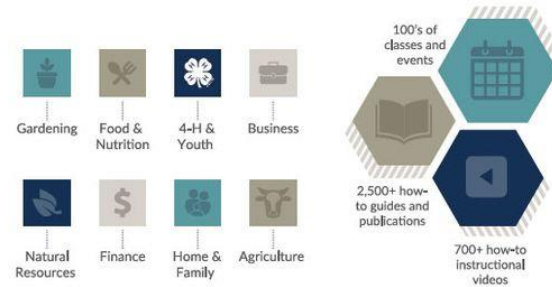


What is Extension?
What does it have to do with health outreach?



**BUILDING KNOWLEDGE.
IMPROVING LIVES.**

Founded in 1914 as part of the Smith-Lever Act, USU Extension plays a primary role in helping Utah State University fulfill its land-grant mission.



In partnership with



Bridging Harm Reduction and Recovery in Rural Communities



This Began With a Vision

This “Extension” model arose at a time when American agriculture was largely inefficient and only marginally productive... A century later, American agriculture is without equal in its contributing food to a growing world population... **We, and others, believe that this same system of Extension can do for the nation’s health what it did for American agriculture.”**

-ECOP Health & Wellness Framework, 2014

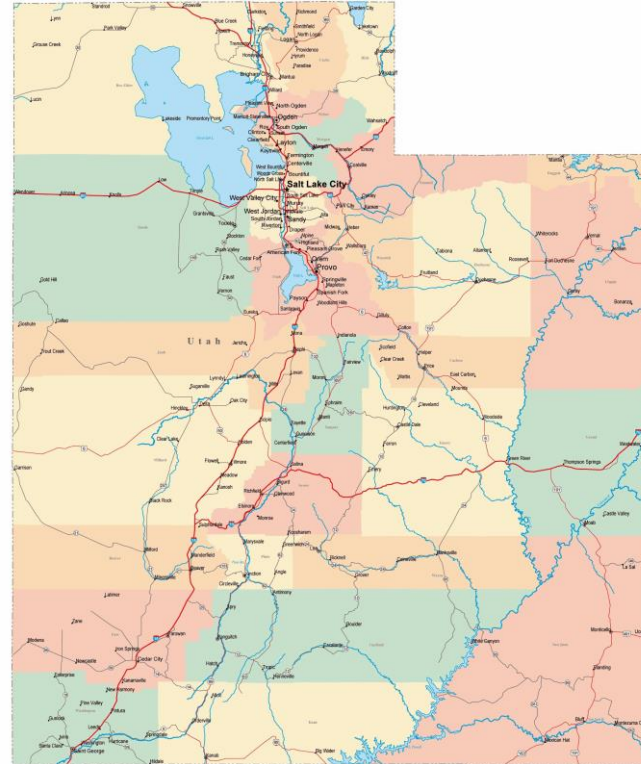
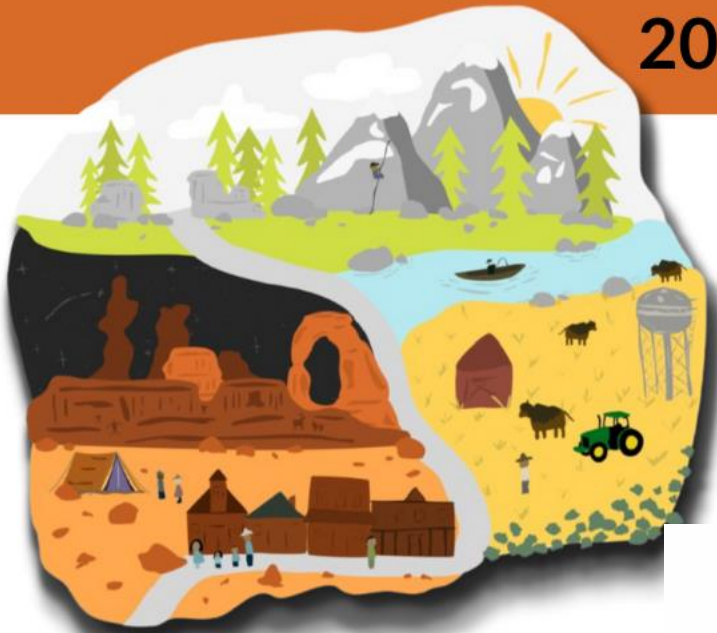
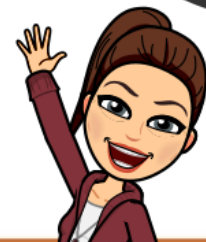
2021 Intermountain Tribal & Rural Opioid Wellness Summit

Bridging Harm Reduction and Recovery in Rural Communities

How does one do that, exactly?

Needs Assessment:

- We use a community based participatory action model
- (That means YOU tell us what YOU need).



EMMA ECCLES JONES COLLEGE OF EDUCATION & HUMAN SERVICES
DEPARTMENT OF KINESIOLOGY & HEALTH SCIENCE
COLLEGE OF HUMANITIES AND SOCIAL SCIENCES
EXTENSION

In partnership with



2021 Intermountain Tribal & Rural Opioid Wellness Summit



Strategies

Bridging Harm Reduction and Recovery in Rural Communities



21/29 Counties
Served in 4 years



HEALTH EXTENSION
Advocacy. Research. Teaching.



TRIBAL & **R**URAL
OPIOID **I**NITIATIVE



 **Utah State University**
EMMA ECCLES JONES COLLEGE OF EDUCATION & HUMAN SERVICES
DEPARTMENT OF KINESIOLOGY & HEALTH SCIENCE
COLLEGE OF HUMANITIES AND SOCIAL SCIENCES
EXTENSION

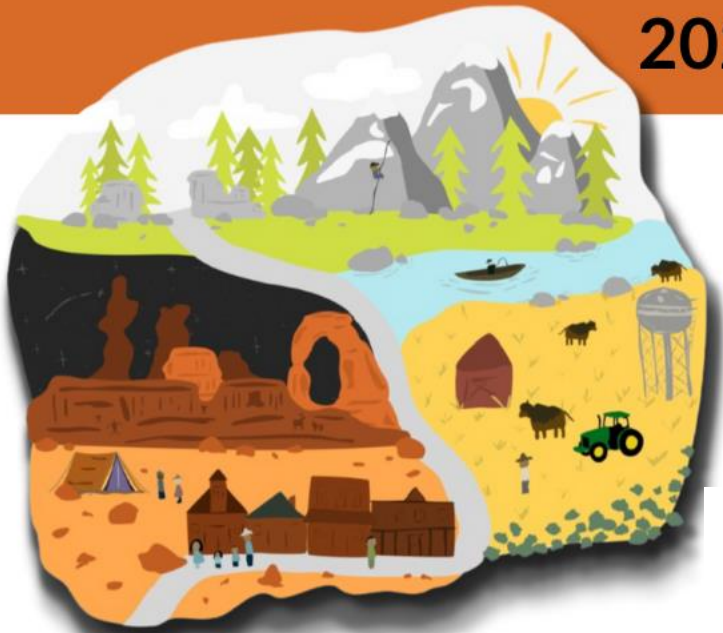
In partnership with

Utah department of
human services
SUBSTANCE ABUSE AND MENTAL HEALTH



2021 Intermountain Tribal & Rural Opioid Wellness Summit

Bridging Harm Reduction and Recovery in Rural Communities



Highlights?

DEBUNKED PODCAST



YOU can help save lives.
Register for a **FREE**,
virtual naloxone training now!

Tuesday, April 20, 2021
9:00 am - 11:00 am
Live via Zoom

Naloxone kit available to Utah participants upon completion.*
*Completion of pre-post-training surveys required.

Presented by the Tribal & Rural Opioid Initiative Resource Center
57 N 100 E | Roosevelt, UT | (435) 722-1200 | khs.usu.edu/outreach/trioi



Trainer: Michelle Chapoose
Licensed Substance Use Disorder Counselor

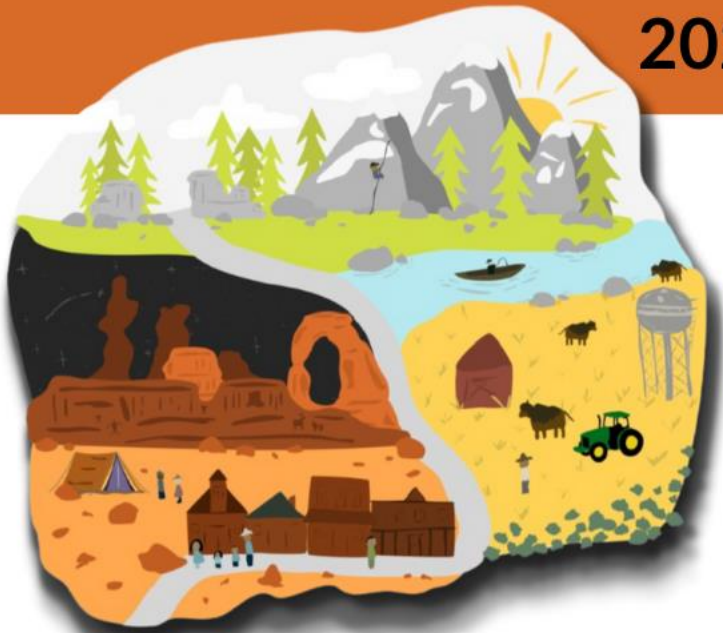


EMMA ECCLES JONES COLLEGE OF EDUCATION & HUMAN SERVICES
DEPARTMENT OF KINESIOLOGY & HEALTH SCIENCE
COLLEGE OF HUMANITIES AND SOCIAL SCIENCES
EXTENSION

In partnership with

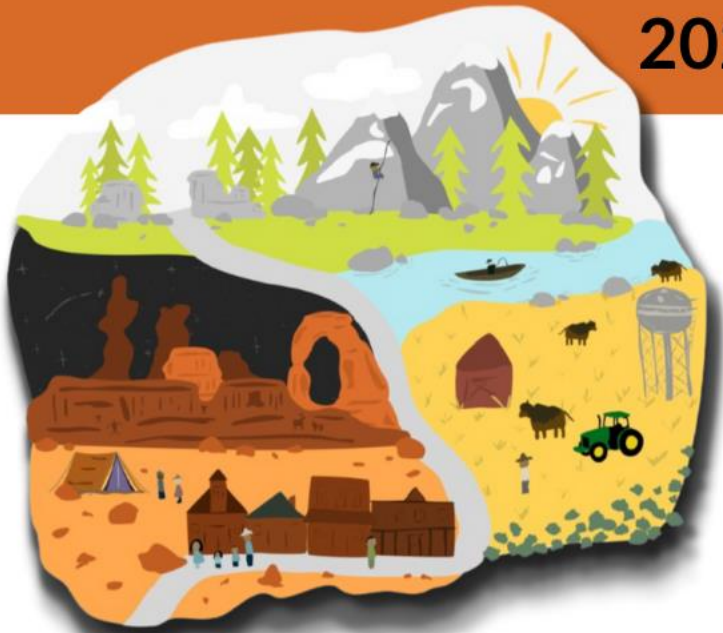
Utah department of
human services
SUBSTANCE ABUSE AND MENTAL HEALTH





Acknowledgements

- The same 1862 Morrill Land-Grant Act that set aside land for USU and similar universities... and helped found Cooperative Extension?
- The Act “redistributed” nearly 11 million acres
 - i.e. the size of Denmark
 - Worth roughly half a billion dollars
- Eastern schools got Western land
- 160 violence-backed land cessions
- Taking land from 250 tribal nations



Land Acknowledgements

- Colorado State University includes on its website a statement that **“our founding came at a dire cost to native nations and peoples whose land this university was built upon. This acknowledgment is the education and inclusion we must practice in recognizing our institutional history, responsibility, and commitment.”**

2021 Intermountain Tribal & Rural Opioid Wellness Summit



Navajo Nation Dikos Ntsaaígíí-19 (COVID-19)

Situation Report #442

Last Updated: May 17, 2021



nities

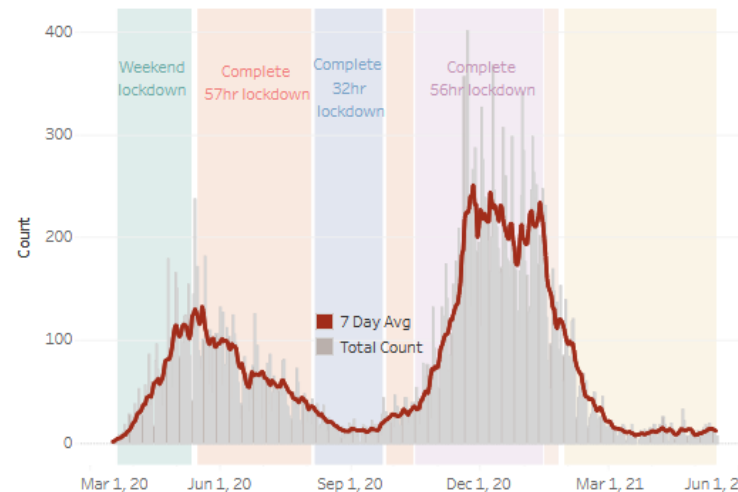
Navajo Nation Residents

Total Confirmed Cases ¹	Total Recovered ⁴	Total Confirmed Deaths ⁵
30,722	29,343	1,293
New Cases from Last Update: 7		Death(s) Reported: 1
Total Tests Completed ²	Total Positive Tests ³	Total Negative Tests
270,405	39,174	219,293

Service Area Confirmed Cases

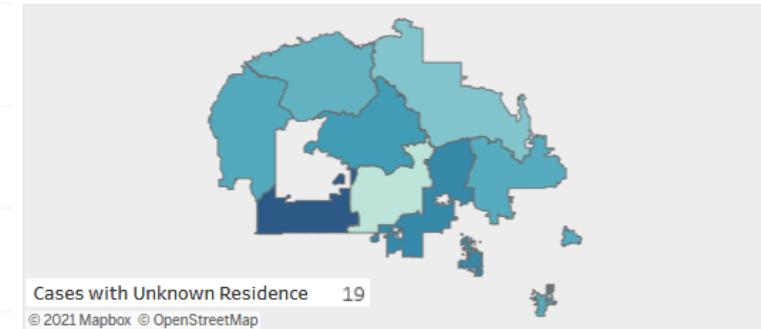
Bordertown	Chinle	Crownpoint	Fort Defiance	Gallup	Kayenta	Shiprock	Tuba City	Winslow
8,570	5,591	2,948	3,656	4,874	2,725	5,189	3,735	1,985

Daily Confirmed Cases on Navajo Nation in All



Navajo Nation Service Area Rates per 10,000 population

1,567.9 2,461.3



**Map reflects estimates on the total number of cases by population area since March 2020, NOT the number of cases in the past 7 or 14 days as presented in Gating Criteria. This map does not reflect current risk levels.

*Click on service area to display more information. Click outside service area to display Navajo Nation information. Ramah is included with Gallup service area and Alamo, Tohajilee are included with Crownpoint service area.

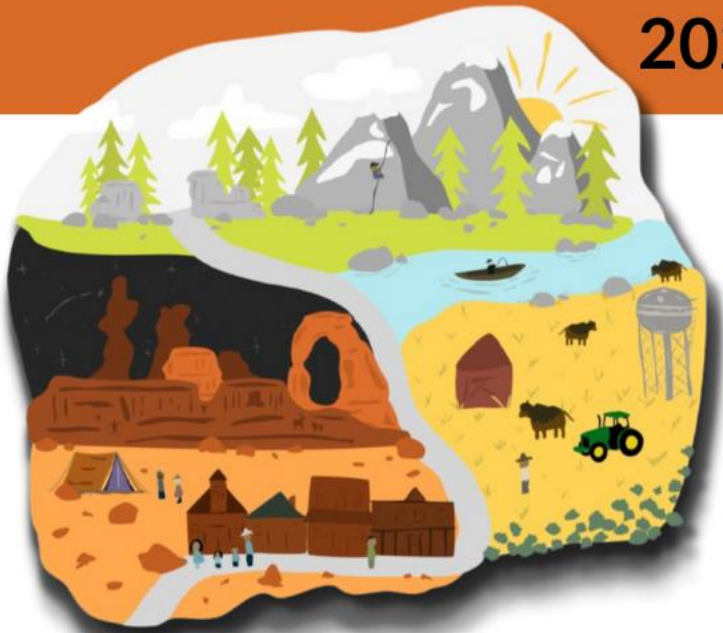


In partnership with



2021 Intermountain Tribal & Rural Opioid Wellness Summit

Bridging Harm Reduction and Recovery in Rural Communities



Bright Spots

SDSU established the Wokini Initiative. In Lakota, the word "**wokini**" translates to "new life" or "a new beginning" and the Wokini Initiative is a new beginning for SDSU.



The Wokini Initiative is South Dakota State University's collaborative and holistic framework to support American Indian student success and Indigenous Nation-Building.



In partnership with



2021 Intermountain Tribal & Rural Opioid Wellness Summit

Bridging Harm Reduction and Recovery in Rural Communities

As we do this work...

- As the nation reckons with its complicated history, land-grant institutions, too, need to acknowledge their legacy of being created “at a dire cost to native nations and peoples.” Doing so, and working with native peoples to address current issues, will give these great institutions a powerful legacy of which we can all be proud.

-Margaret Nash



In partnership with

utah department of
human services
SUBSTANCE ABUSE AND MENTAL HEALTH



2021 Intermountain Tribal & Rural Opioid Wellness Summit

Bridging Harm Reduction and Recovery in Rural Communities



Additional Reading

- Nash, M. "Entangled Pasts: Land-Grant Colleges and American Indian Dispossession," *History of Education Quarterly* 59(4) 2019
- <https://www.ndoh.navajo-nsn.gov/covid-19>
- <https://www.washingtonpost.com/outlook/2019/11/08/dark-history-land-grant-universities/>
- <https://www.sdstate.edu/wokini>
- <https://www.nytimes.com/2020/05/07/opinion/land-grant-universities-native-americans.html>



In partnership with

utah department of
human services
SUBSTANCE ABUSE AND MENTAL HEALTH

