

BEWARE

of hitchhikers



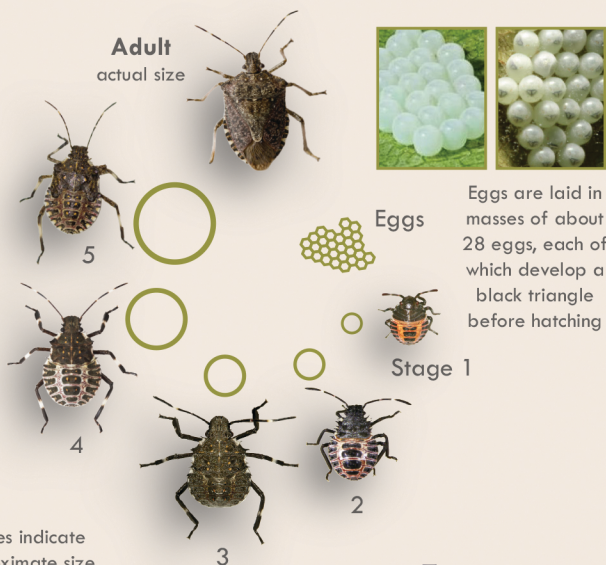
Brown Marmorated Stink Bug

Help prevent these invasive insects from hitching a ride to new locations.

The brown marmorated stink bug was accidentally introduced from Asia, and causes extensive damage to many types of ornamental plants, shrubs, trees, and fruit and vegetable crops.

This pest has a **mottled brown and shield-shaped body, distinct banding on antennae, legs and edge of back, and smooth and rounded shoulders.** It is about **5/8 inch long.**

If you see this insect, contact the Utah Cooperative Agricultural Pest Survey (CAPS) Program!
Email: caps@usu.edu
Website: www.utahpests.usu.edu/caps



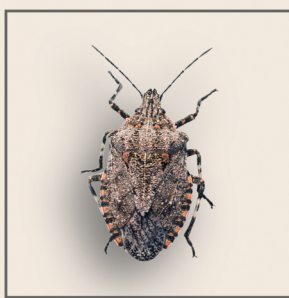
Circles indicate approximate size of eggs & nymphs during life cycle

look-alikes



Brown Marmorated Stink Bug

- distinct banding on antennae
- blunt face
- smooth “shoulders”
- single light band on legs
- shield-shaped



Rough Stink Bug

- no bands on antennae
- pointed face
- rough, toothed “shoulders”
- two white bands on back legs



Western Conifer Seed Bug

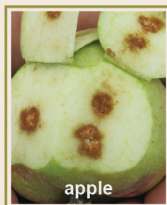
- long narrow body
- red and orange
- hind legs dilated



Boxelder Bug

- long narrow body
- black and red

damage



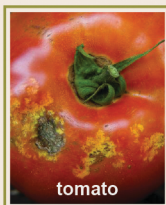
apple



peach



corn



tomato

BMSB feeds on over 100 host plants. It is also a major nuisance pest that will invade homes during the fall and winter.

Photos: Apple by Chris Bergh, Virginia Tech; Peach by Peter Jentsch, Cornell University; Corn, tomato & eggs without triangles by Steve Schoof, NCSU; Eggs with triangles by Matt Rourke, Associated Press; Boxelder bug by J.K. Barnes, University of Arkansas; Western conifer seed bug by Kurt Andreas, Michigan State University; All others by Chris Hedstrom, Oregon State University.

Authors: Lori Spears, Diane Alston, & Cami Cannon

Utah State University is an affirmative action/equal opportunity institution. Published January 2016.