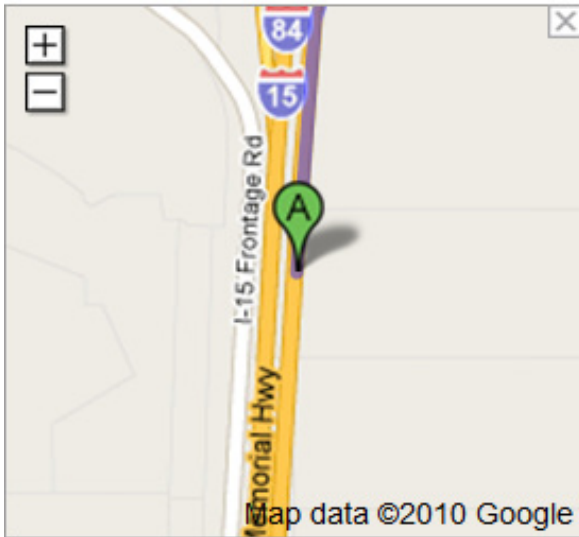
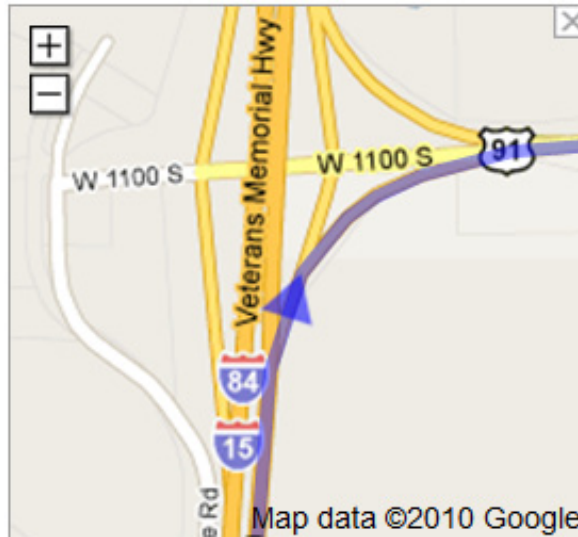


DRIVING DIRECTIONS

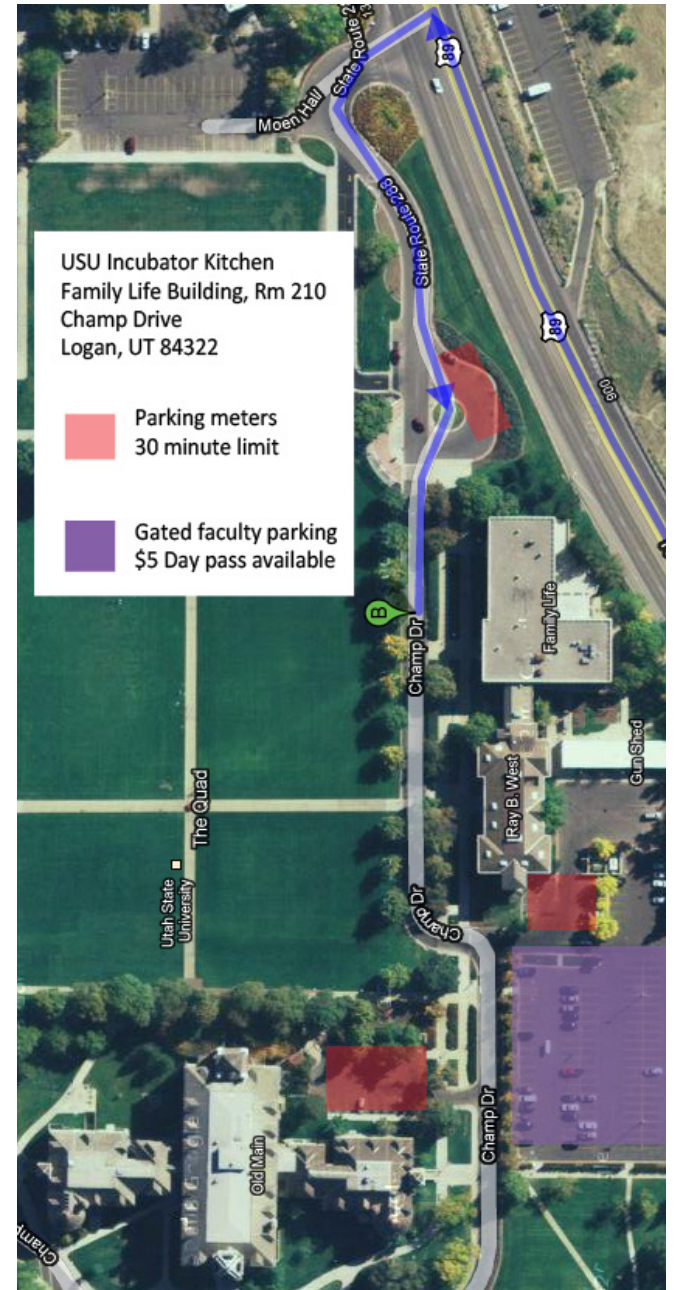
1. Head **north** on **I-15 N/I-84 W** toward **Exit 362**



3. Keep **right** at the fork, follow signs for **Brigham City/ Logan/Perry** and merge onto **US-91 NW 1100 S**
Continue to follow US-91 N
About 33 mins



8. State Route 288 turns slightly right and becomes **Champ Dr**



2. Take exit **362** for **1100 S St** toward **US-91/US-89**



7. Turn **left** at **State Route 288**
About 1 min

