

About Sheep

Utah Social Studies



Materials

- ◆ Book pages (The cover should be copied onto construction paper or cardstock, the remainder on regular white paper.)
- ◆ Samples of clean and unclean wool (available from Utah AITC)
- ◆ Felt samples
- ◆ Wool, yarn, or fabric samples
- ◆ Glue
- ◆ Crayons

Time: 1 hour

Grade Level: 1

Standards

Integrated

Compare Utah seasons, plants, and animals with those of Australia.

Background

Sheep ranching is one of the major agricultural endeavors in Utah. It is also major industry in Australia. “The Land Down Under” is a leading world exporter of wool. They are especially known for their fine merino wool, used to create some of the finest, lightest fabrics in fashion today.

Sheep ranchers frequently use dogs to help them out in their work. Working dogs could be Border Collies or Australian Shepherds. Some guarding dog examples are the Komondor, Great Pyrenees, and Akash. The ranchers don't play with their guard dogs. They prefer the dogs to be with the sheep to protect them. In the United States, guarding dogs protect against coyotes, bears and cougars. In Australia, dingos are a dog-like predator that guarding dogs must keep from the flocks.

The lamb is the name for baby sheep up to one year, the ram is the male, and the ewe (pronounced, you) is the female. After a sheep's wool has been shorn, the wool is washed and dyed the desired color. It is then carded. Carding is a process whereby the wool is combed or brushed with a tool, named the card, in order to detangle the fibers before they are spun. The card can be either a wire-toothed brush used by hand or a machine fitted with rows of wire teeth. Spinning is the process which twists the individual wool fibers together to create yarn. You can see how those fibers are twisted together by untwisting a strand of yarn. When a cloth is woven, strands of yarn are interlaced. The yarn running the length of the fabric is called the warp. The yarn running across the warp thread is called the weft.

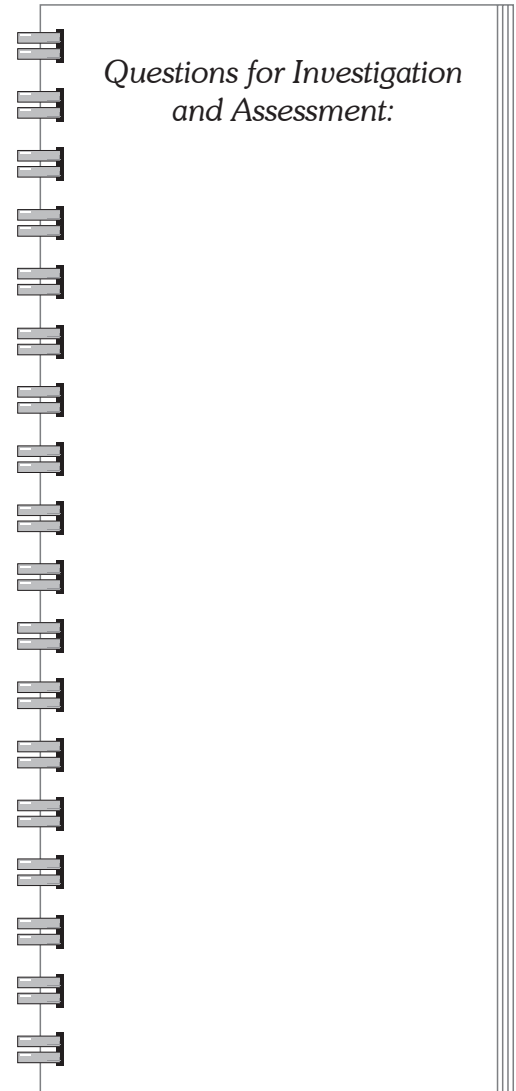
Sheep are used for more than just their wool. Their by-products are used in a variety of industries. Some items using sheep by-products include: hand soap, medicines, cosmetics, buttons, bandage strips, dice, chewing gum, candles, and on and on!

Activity Procedures

1. Share some of the background information, connecting Utah to Australia through the sheep industry.
2. Guide the students through the construction of their books. The front covers should be cut out uniquely to the shape of the sheep, the remaining pages are cut out following the lines. All the pages can be colored or have samples glued to them as noted on the corresponding pages. Once completed the books can be shared as a class and with families.

Additional Activities, What's Next?

1. Invite a guest to your class with a spinning wheel or weaving machine to discuss and demonstrate their processes with the class.
2. Take a field trip to a sheep farm or invite a sheep producer to your class to talk about the care and uses of sheep.
3. Contact Utah Agriculture in the Classroom for more resources on sheep.

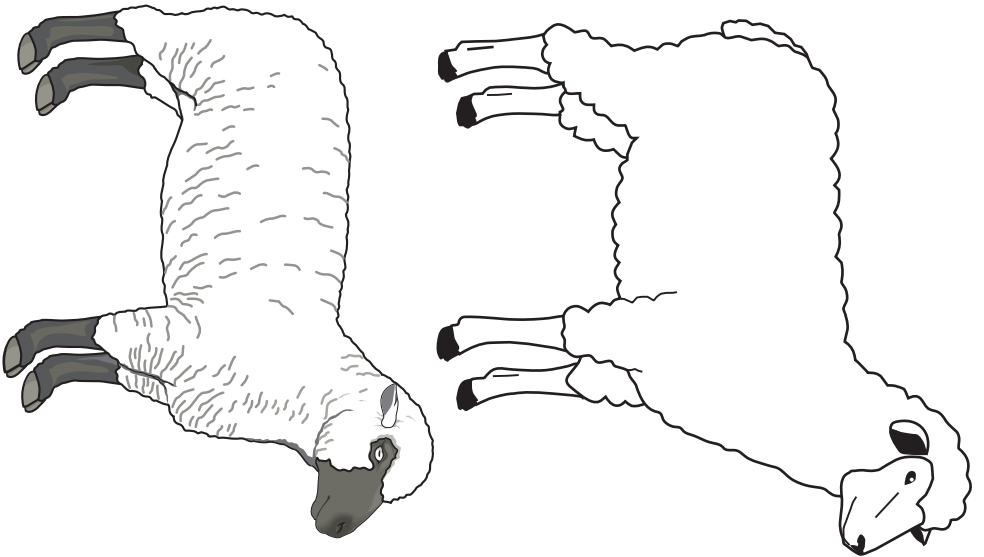


About Sheep



by _____



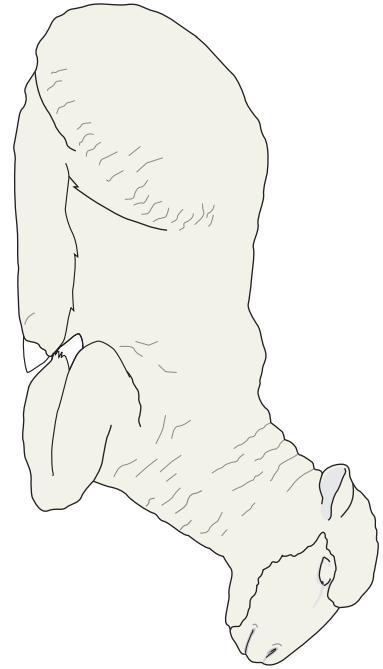


Glue
cleaned
sample of
washed
wool here.

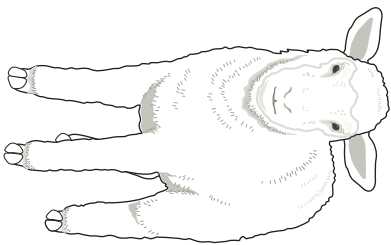
The hair on a sheep is called wool. All the wool on a sheep is called the fleece. Some sheep have fine wool and some have coarse wool. Wool is sheared once a year, in the spring. After the wool is sheared it is sent to a mill and washed.



I am _____

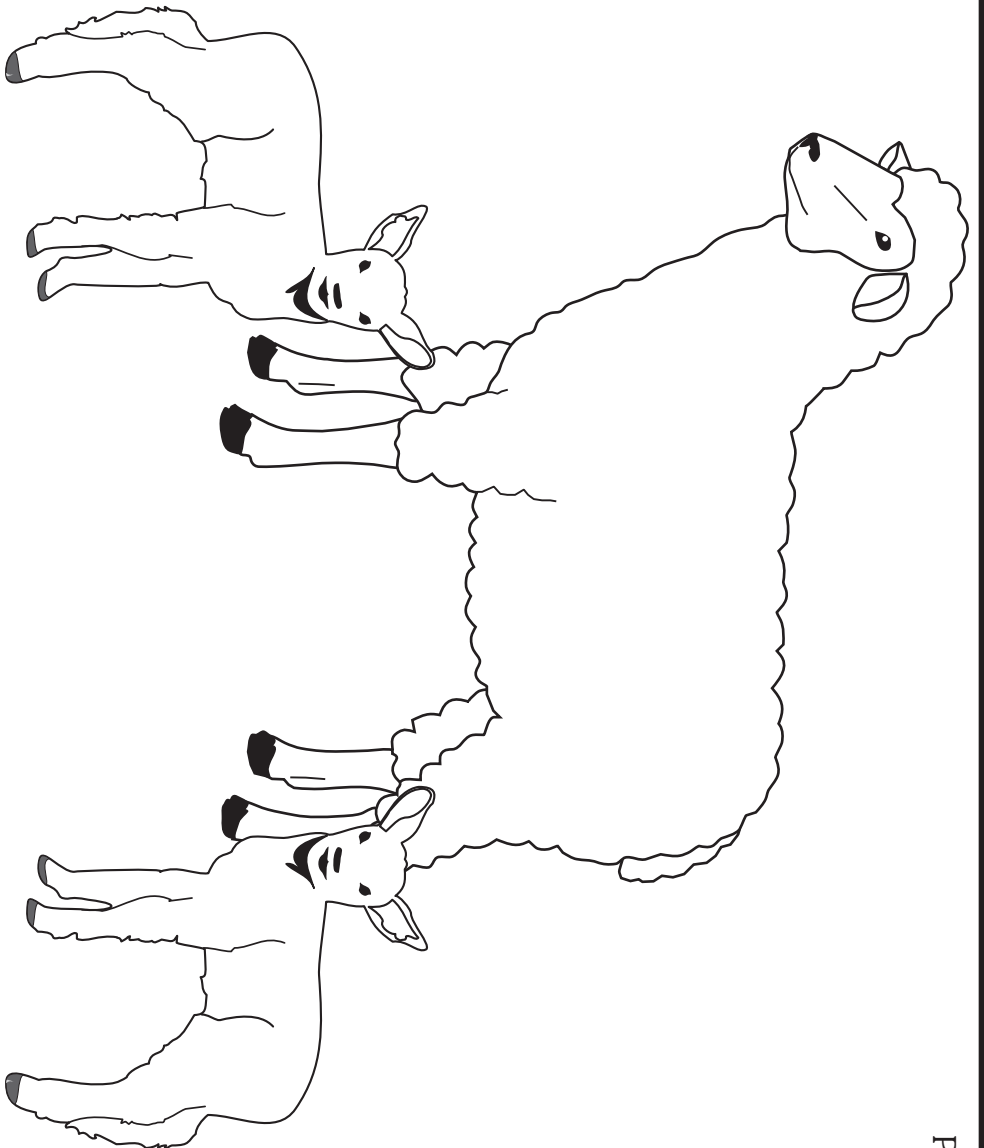


I am _____

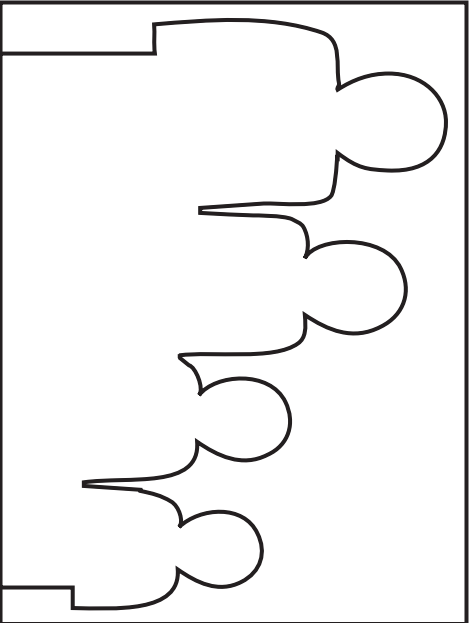


I am _____

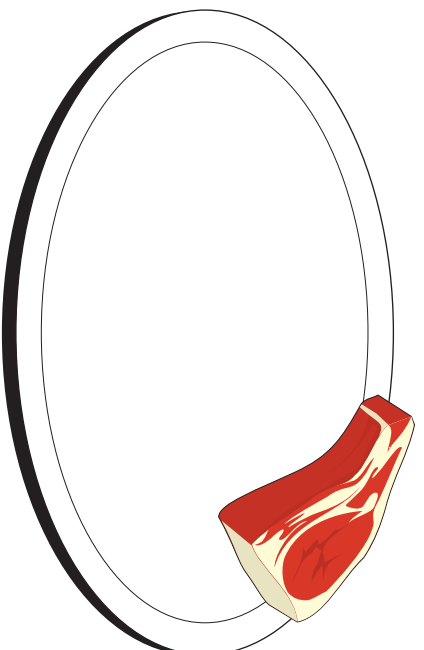
A male sheep is called a ram, a female sheep is called a ewe, and a baby sheep is called a lamb.



Sheep are foragers. They eat grass, shrubs, and grain. Sheep may be found on Utah ranges or on a rancher's pasture. Ewes usually have two lambs every spring. Draw some grass, shrubs, or grain that these sheep can eat.



Color some wool clothes, coats, or scarves on this family.



Draw some of your other favorite foods on the plate.

Glue a sample of felt here.

Glue a sample of wool yarn or fabric here.

Sheep provide wool for clothes, blankets, carpets, and felt. A special kind of oil called lanolin is produced by the sheep's skin and is used in hand lotion and soap. Sheep are also produced for their meat.