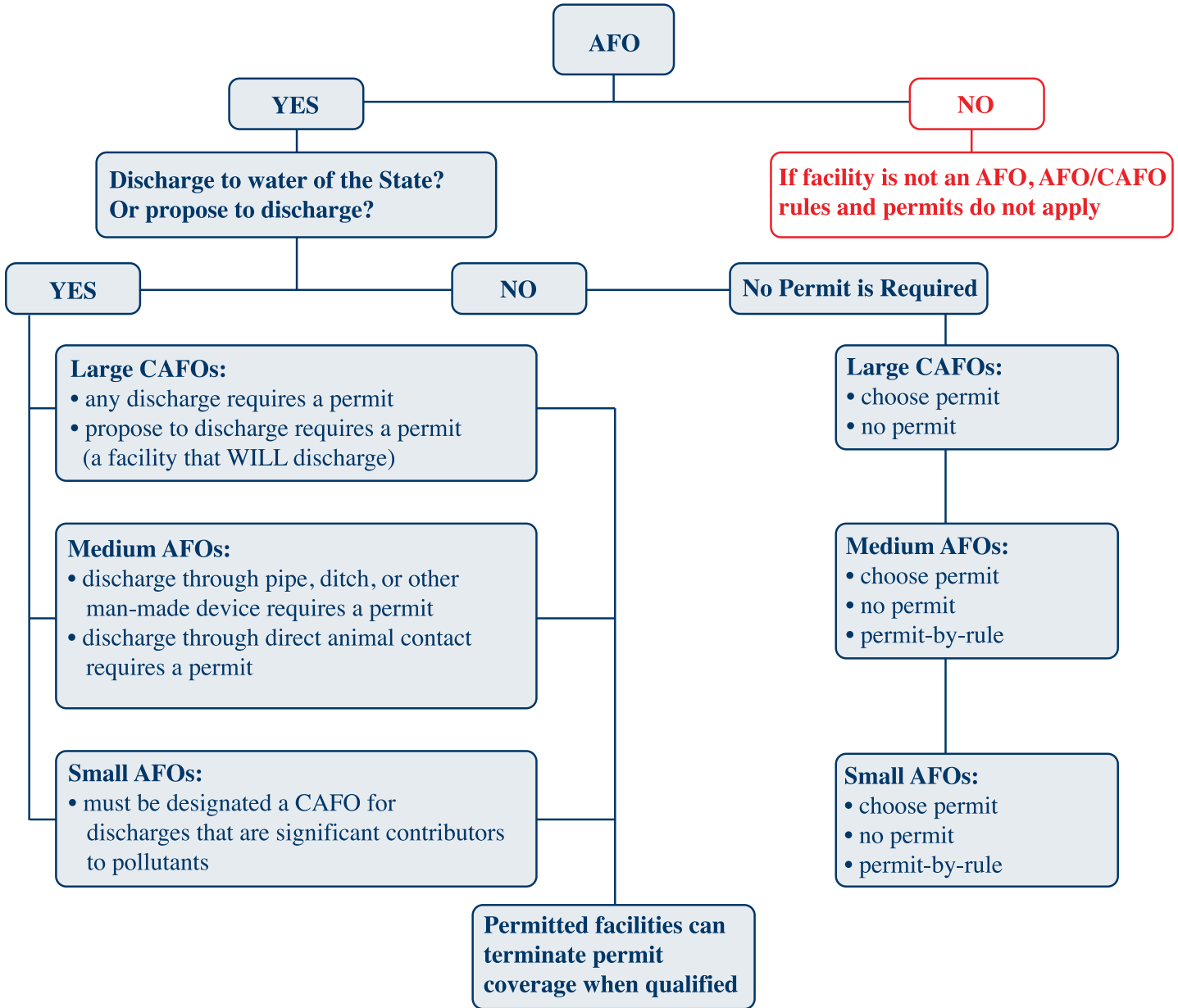


# Does My Facility Require a CAFO Permit?



Large CAFO	Medium AFO	Small AFO
1000+ beef, heifers, or calves	300-999 beef, heifers, calves	1-299 beef, heifers, calves
700+ cows (milking or dry)	200-699 cows (milking or dry)	1-199 cows (milking or dry)
125,000+ layers	37,500-124,999 layers	1-37,499 layers
55,000+ turkeys	16,500-54,999 turkeys	1-16,499 turkeys
2,500 + swine (≥55 pounds)	750-2,499 swine, (≥55 pounds)	1-749 swine, (≥55 pounds)
10,000+ swine (< 55 pounds)	3,000-9,999 swine (< 55 pounds)	1-2,999 swine (< 55 pounds)
10,000+ sheep	3,000-9,999 sheep	1-2,999 sheep
500+ horses	150-499 horses	1-149 horses

**Note:** A discharge is any pollutant in any amount that contacts a water of the State, resulting from any cause or rainfall amount. Any discharge from an unpermitted Large CAFO is prohibited and requires a permit. Small and Medium AFOs must discharge as specified in rule to require a permit. Permitted facilities are allowed discharges if the permit is followed. Small and Medium AFOs with the Permit by Rule (PBR) may have discharges over the 25-year, 24-hour storm event, if the PBR criteria are followed. Facilities that **will discharge** from any cause or rainfall amount, are those facilities that “propose to discharge” and require a permit.