

# Selected Project Portfolio

## USU/LAEP EXTENSION



LANDSCAPE ARCHITECTURE  
& ENVIRONMENTAL PLANNING

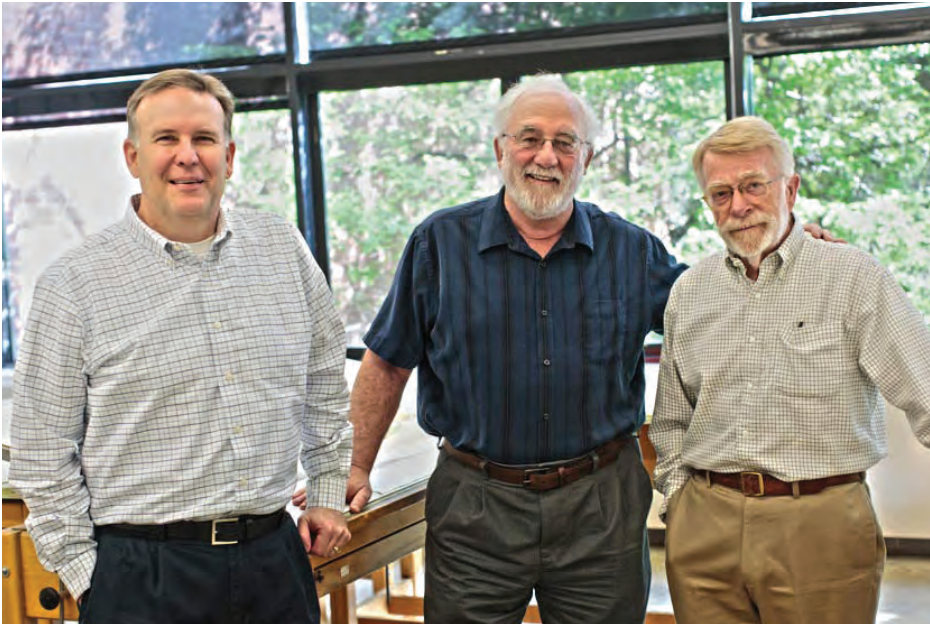
EXTENSION   
UtahStateUniversity

## USU LAEP EXTENSION FACULTY

David Anderson

David Evans

David Bell



Dear Citizens of Utah,

The Department of Landscape Architecture and Environmental Planning has a unique and successful partnership with Utah State University Extension. For the past 43 years, LAEP Extension has served communities statewide, and provided the design, communication and fundraising tools important to informed community development.

Throughout the history of the partnership, LAEP has provided invaluable service to our rural communities, and increasingly adds to our expanded focus on urban communities. Their work is an important feature of our outreach efforts, including our sustainable environmental initiatives. As examples, the projects in this portfolio have set the stage for grant applications, fundraising, community dialog and professional consulting.

In addition to the community benefits of the program, LAEP Extension includes a strong service-learning component. From the annual, all-department Charrette to the student-led Community Design Studio, LAEP Extension facilitates the education of future landscape architects, addresses the environmental well being of Utah, and positively impacts the health, safety and welfare of our citizens.

This portfolio is representative of the breadth and impact of the LAEP Extension partnership, and is emblematic of the values and mission of USU Extension. The work included demonstrates a comprehensive range of public improvement contributions. Based on their long history of community and student service, it is our good fortune to have LAEP Extension as a member of our USU Extension family and as a resource to the state of Utah.

Sincerely,

A handwritten signature in blue ink that reads "Brian Higginbotham".

Brian Higginbotham  
Associate Vice-President  
Utah State University Extension



## David L. Bell, MLA

### USU EXTENSION SPECIALIST/ASSOCIATE PROFESSOR

David Bell is a Utah State University Extension Landscape Architect and an Associate Professor of Landscape Architecture and Environmental Planning. He has provided planning and design services to Utah communities including master plans, downtown redevelopment plans, parks, recreation and open space planning, community entry feature designs most of which have provided educational opportunities for students in the classroom or as interns. He also has taught at North Carolina State University, the University of Michigan and at Arizona State University.

Prior to teaching, David had over 25 years experience in community planning and design and worked on projects throughout the United States, Canada, Mexico, Europe and Asia including the planning and design of new communities, resorts, urban centers, streetscapes, parks and open space, and regional plans. He received a BLA from Utah State University and an MLA from the University of Michigan.



## David T. Anderson, MLA, ASLA

### PROFESSIONAL PRACTICE ASSOCIATE PROFESSOR

David Anderson is an Associate Professor in the Department of Landscape Architecture and Environmental Planning at Utah State University where he has teaching and Extension assignments. David instructs the department's Introduction to Landscape Architecture course and co-instructs the Residential Land Planning Studio.

For 18 years, David worked as the Assistant Director and Director of the Utah State University Botanical Center (USUBC) in Kaysville, Utah. The USUBC is a 100-acre facility owned and operated by Utah State University dedicated to the mission of promoting resource conservation.

David has extensive experience and interest in water-conserving landscapes, regional identity, sustainable design and environmental education. He serves on USU's Sustainability Council. Dave has a Bachelor's degree in Ornamental Horticulture from Brigham Young University and a Master of Landscape Architecture from USU.



## David T. Evans, MSED, MUD

### PROFESSIONAL PRACTICE ASSISTANT PROFESSOR

After 25 years of professional practice in California, David joined the LAEP faculty in 2012. His role in the department includes teaching and leadership of the Community Design Studio (CDS), an Extension/LAEP partnership. The CDS is focused on service learning and community engagement. Working with a graduate assistant, David leads small student teams that provide landscape architectural services to the community. The CDS is an opportunity for the students to work directly with a client and meet a mutually defined scope of services and schedule. Other teaching assignments include Construction Document Preparation, Site Planning & Design, Professional Practice, and as co-instructor, the Field Studio, a class focused on landscape construction.

David's 37-year professional history includes design/build, development planning, park and open space design, downtown and corridor revitalization, and public facilitation and construction. His education includes a Master of Science in Ecological Design from the Conway School, and a Master of Urban Design from UC Berkeley.

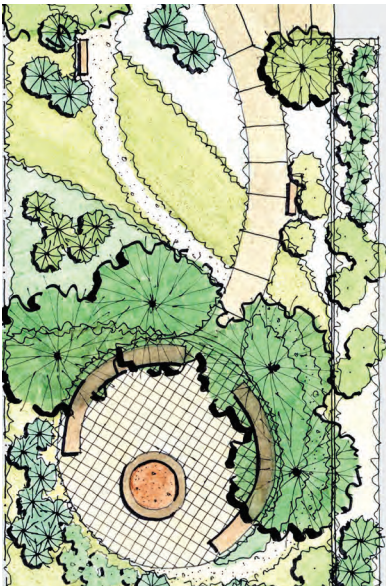
# Principles and Services



## Principles

### Land Grant Mission

In the spirit of our land grant mission, LAEP Extension serves individuals, agencies, non-profit organizations and communities statewide. Our mission is to create communication and fundraising tools that establish a design vision, support client objectives and lead to successful grant and fundraising activities. Our work typically addresses underfunded projects, and sets the stage for professional consulting.



### Stakeholder Communication

In a community setting, we work to establish unbiased and transparent lines of communication. Creating a community vision is a democratic, inclusive and collaborative process, and begins with an understanding of the stakeholder's needs. Design that flows from an open dialogue leads to a vision that accurately reflects community needs.

### Sustainable Education

Sustainable design is now a fully integrated part of our professional lexicon, and an idea ubiquitous to community design. Given our environmental design expertise, LAEP Extension provides the communication and design tools critical to envisioning a sustainable future. Our role as educators can broaden public environmental discourse and establish a communities' vision for sustainable design.



## Services

### Services Design and Delivery

What we learn about the community from the stakeholders, informs the design and delivery of services. Our client's program has a direct correlation to the services provided. Regional or district scale projects may be suited to studio teaching or our all-department charrette, while smaller projects might be produced by a field specialist or small student team.



### Environmental Assessment

Environmental Assessment is critical to design concepts that work and satisfy client goals. What we learn from our assessment is an opportunity to teach and broaden community awareness. The opportunities and constraints inherent in every project grow from a thorough analytical foundation. In combination with effective stakeholder communication, environmental assessment is at the heart of successful design and long-term value to our clients.

## Park, Open Space & Trail Design

Park, open space and trail design is fundamental to our professional identity, and forms the democratic armature of pedestrian access and community health. These projects often include city, county and federal collaboration and benefit from our focus on stakeholder communication and collaborative design. As a discipline, our history of park, open space and trail design is central to our LAEP Extension identity and services.



## Urban, Corridor & Site Design

As communities' look to minimize infrastructure investment, urban and corridor revitalization is the centerpiece of public design. These project types address the changing needs of our communities and better prepare our students for the marketplace. In addition to the downtown and corridor scale, site-specific projects are the primary focus of LAEP Extension planning, design and service-learning work.



## Gateway & Identity Design

Important to the success of downtown and corridor revitalization projects is a community's sense of arrival and identity. Gateway and identity design can convey a fresh sense of community optimism and spirit, and is a core service. Strengthening the sense of arrival and identity is a welcoming invitation to stop, shop and add to the life of the community.



## Guidelines & Standards Preparation

In the interest of long-term design value, LAEP Extension can provide design guidelines and standards. These tools contribute to future cost-effective design and effective community decision-making. Guidelines and standards have significant 'shelf-life', establish a clear understanding of community preferences and shorten the public review and approval process. Guidelines and standards inform future design, add to project efficiency, and express our client's vision.

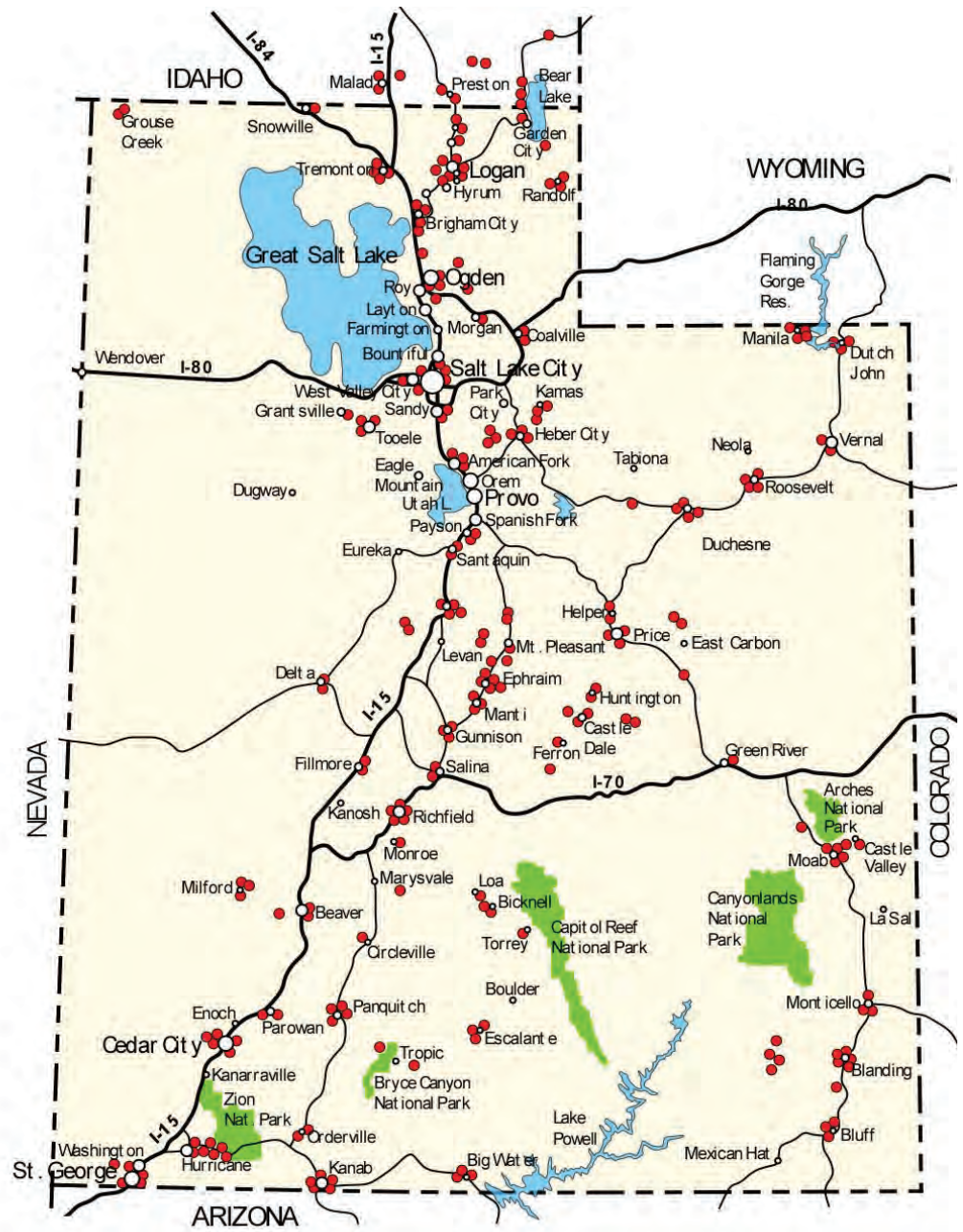


## Marketing, Communication & Fundraising Tools

The LAEP Extension products are geared toward public dialogue, identity, marketing, fundraising and design value. All of the graphic and narrative outputs are tied to program, existing conditions analysis, and collaborative dialogue. The words and images of LAEP Extension express a community vision, and serve as a basis for successful grant applications, consultant communication and enduring community support.

# Extension LAEP Project Locations

FROM 1993 TO PRESENT



## Selected Client List

Gary Anderson, Past Mayor  
Ephraim City & USU Extension Agent

Walt Baker, Director  
Utah Division of Water Quality

James Barnhill, USU Extension  
Weber County

Jason Barto, Community Forester  
Wasatch Back Trees

Monte Bona, Council Member  
Mount Pleasant City

Betsy Byrne, Lead Planner  
Envision Utah

Nathan Coats, Director of Operations  
Cache Valley Transit District

Troy Cooper, Director  
Willow Park Zoo

Brian Cottam, Division Director / State Forester  
Utah Division of Forestry, Fire and State Lands

Andrew Cushing, Fisheries Coordinator  
Utah Division of Wildlife Resources

Sean Damitz, Director  
USU Center for Civic Engagement & Service Learning

Tom Dansie, Director of Community Development  
Springdale, Utah

Marcy Demillion, Community Planner  
National Parks Service

Julie Fisher, Executive Director  
Utah Department of Heritage and Arts

Greg Graves, Commissioner  
Ogden Valley Planning Commission

JayDee Gunnell, USU Extension  
Davis County

Ryan Halverson, Landscape Architect  
Utah Department of Transportation

Dan Harelson, Project Manager  
Portneuf Greenway Trail Foundation

Steve Hiatt, Mayor  
Kaysville City

Mark Holden, Project Manager  
URMCC

Jim Huppi, Campus Landscape Architect  
Utah State University

Gay Jorgensen, Director  
Lewiston Senior Living Center

Dave Livermore, Director  
The Nature Conservancy of Utah

Shannon Miller, Director  
Central Utah Pioneer Heritage Association

Nancy Monteith, Landscape Architect  
Salt Lake City Parks & Public Lands

David Ogden, Mayor  
Richfield City

Jordan Oldham, Park Planner  
North Logan City, Utah

Shawn Olsen, USU Extension  
Davis County

Father Pires, Priest  
St. Thomas Aquinas Catholic Church

Julie Ann Prescott, Director  
Ranches Homeowners Association

Larry Rupp, USU Extension  
Water Conservation Specialist

Rob Sweeten, Landscape Architect  
Bureau of Land Management Utah State Office

Bronson Tatton, Landscape Architect  
JUB Engineers

Sean Warnke, City Manager  
Tremonton City, Utah

Blake Wigdahl, VP Design & Programming  
Thanksgiving Point Institute

Michael Wolford, Director  
Don & Janet Wolford Foundation

Brennan Wood, Economic Development Director  
Cedar City Corporation

# Ogden Valley Charrette

WEBER COUNTY/OGDEN VALLEY PLANNING COMMISSION  
OGDEN VALLEY, UTAH



## FEATURES

- 50,000+ Acres
- Resort Planning
- Ag. & Wildlife Preservation
- Water Quality & Quantity
- Monastery Preservation Planning
- Pineview Reservoir
- Community Growth
- Transportation

## OUTCOMES

- 60 - 24"X 36" Posters
- County Council Presentations
- Planning Commission Presentation
- Pre-charrette, Citizen Workshop
- 100 Stakeholders Involved

## IMPACTS

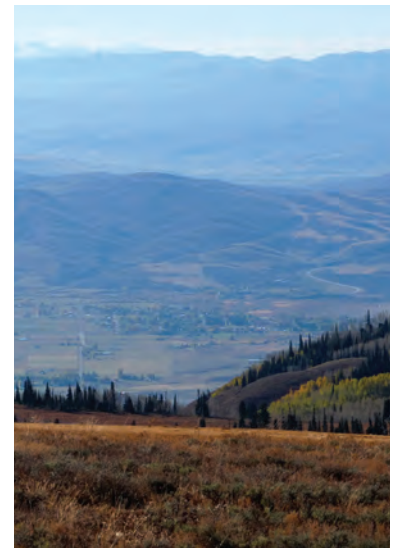
- 100 Stakeholder Participants
- 120 Students - 6,000 Hours
- \$100K for Future Planning
- Benefit to 7,000 Residents
- Trail Concept - 20 New Miles
- 2 New Studio Projects
- Viable Wastewater Solutions

The LAEP Charrette is a fast-paced, dynamic planning and design exercise. Each year the LAEP Department engages all of the LAEP students and faculty in a week-long charrette. The purpose is to expose students to complex issues in a real place with actual clients that result in tangible and meaningful impacts.

During the 2014 Charrette, LAEP students were exposed to growth and development issues in a beautiful valley 20 minutes east of Ogden, Utah. The valley is home to three ski resorts, three small communities, a reservoir, a monastery, wildlife and breath taking vistas.

*"I think [the Charrette] will have a remarkable impact because I think people will begin to see, number one, what can be done to make the valley very interesting for visitors and the associated businesses. There was just a wealth of information there, and it was great to see such a broad range and depth of thinking."*

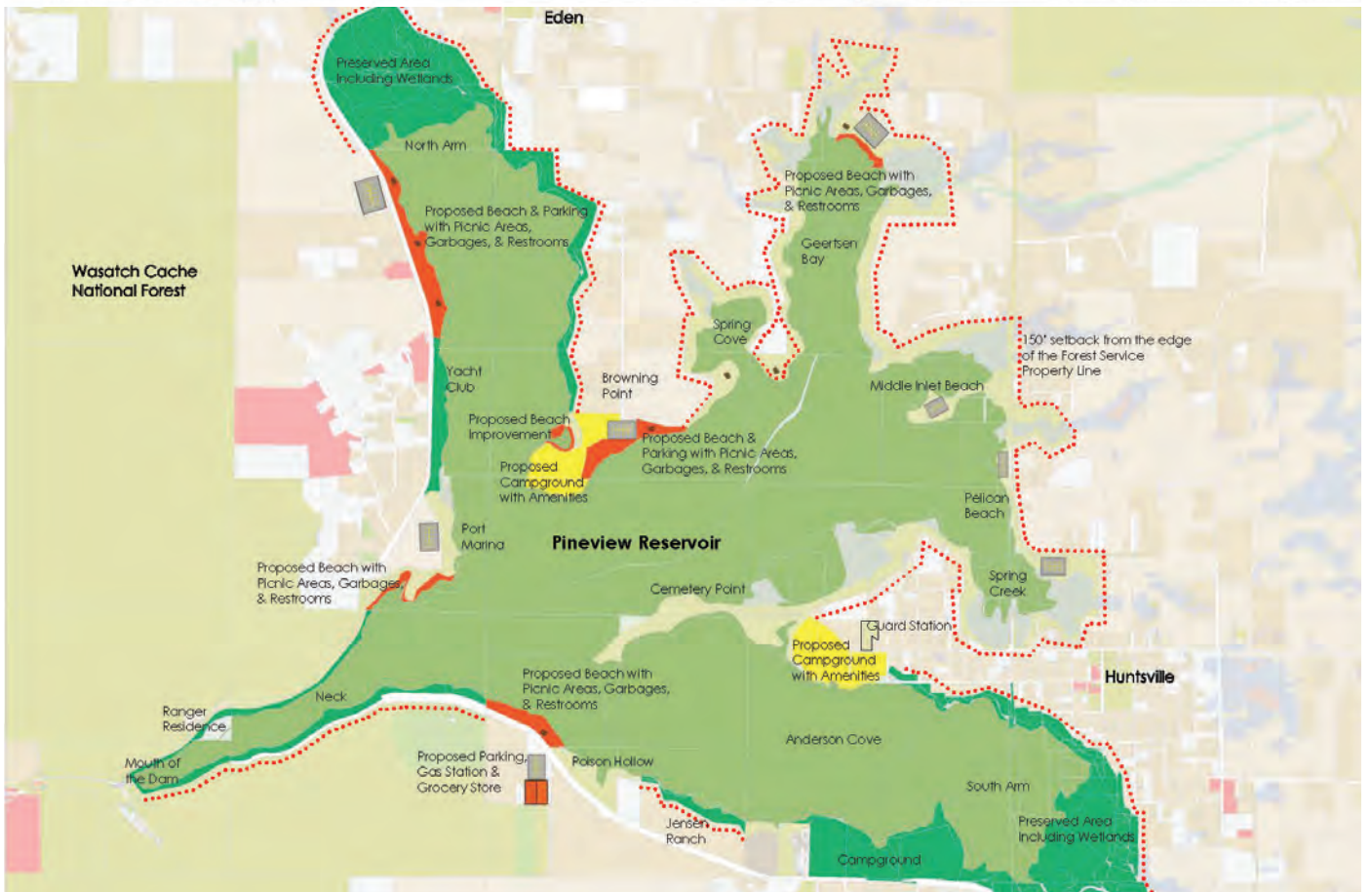
— Pen Hollist, Chairman  
Ogden Valley Planning Commission



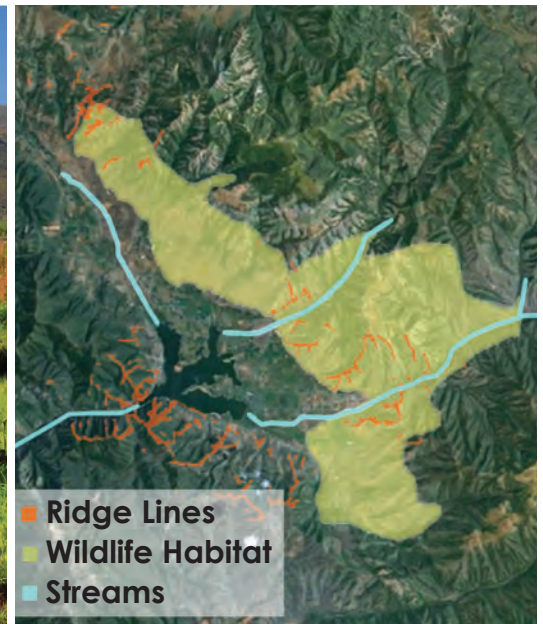
LANDSCAPE ARCHITECTURE  
& ENVIRONMENTAL PLANNING

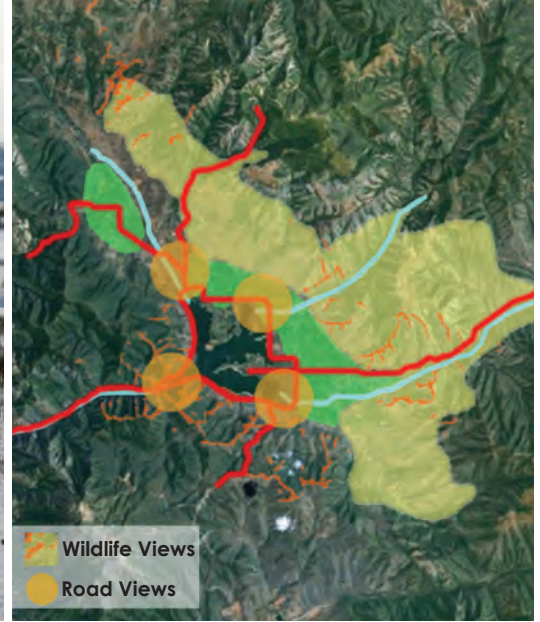
EXTENSION   
UtahStateUniversity





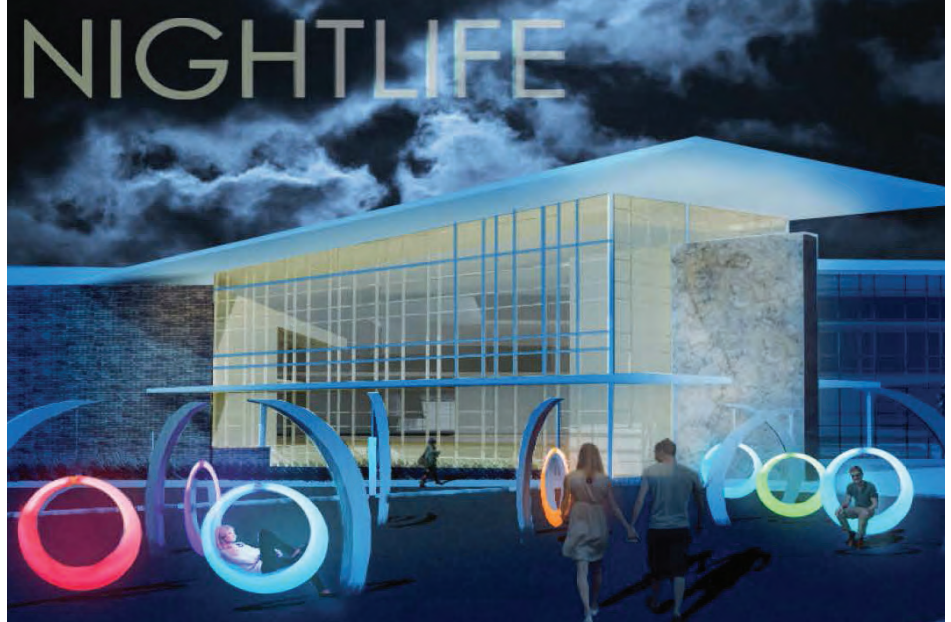
# Ogden Valley Charrette





# USU Proposed Student Center

UTAH STATE UNIVERSITY  
LOGAN, UTAH



## FEATURES

- Inaugural Dean's Prize
- Redesign of Aggie Boulevard
- Amphitheater
- Improved Pedestrian Access
- Diverse Outdoor Use Areas
- Dry Climate Garden
- Defines Heart of the Campus

## OUTCOMES

- 8 Master Plans for Jury Review
- Fundraising/Communication Tool
- Future Design Tool

## IMPACTS

- Experience for 24 Students
- 600+ Hours Studio Production
- Showcased in the Student Center
- Displayed at USU Homecoming
- Design Competition Experience

The Proposed Student Center Plans reinforce the student heart of campus, improve outdoor use and access, provide an amphitheater for student events, redesign Aggie Boulevard, and develop a comprehensive dry climate garden throughout. Student teams prepared a submittal for jury review. Winners were selected, and the Dean's Prize awards ceremony held during the final class celebration.

Student teams of three were formed with a total of 8 submittals. A jury of campus leaders, including Dean White, selected the winning and honorable mention teams. The project area and design program were established by Student Services and USU Facilities, and grows from the existing Student Center Feasibility Study.

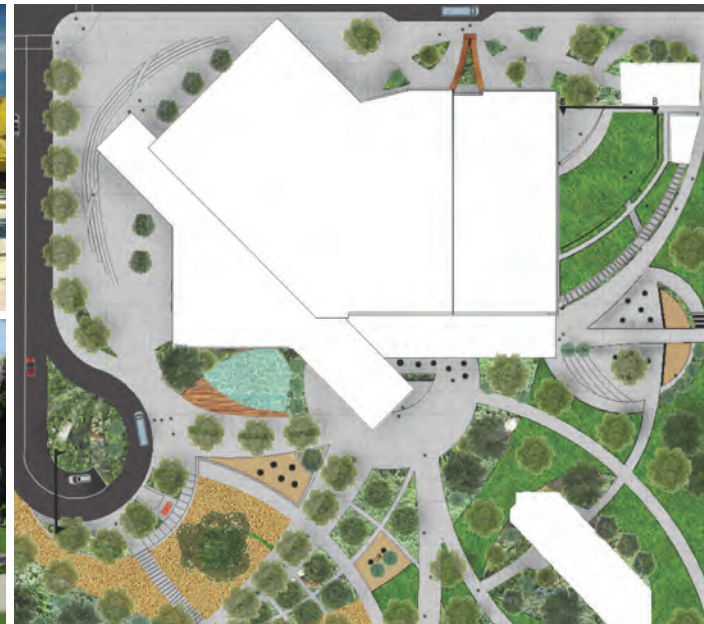
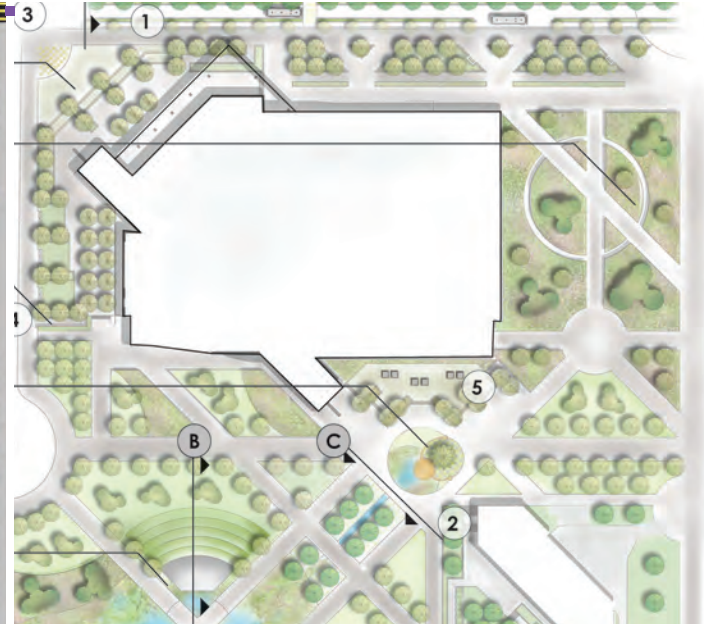
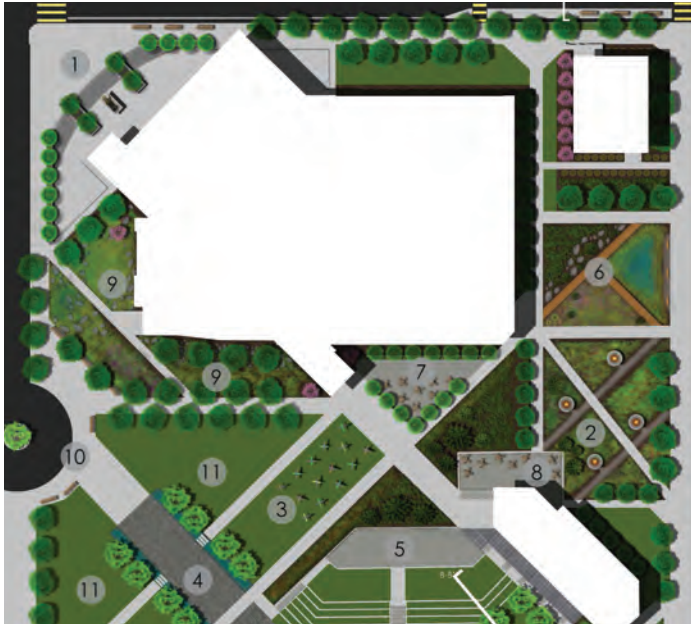
The plans, sections and perspectives are touchstones for Campus Facilities as the design process for the new Student Center unfolds. The project was an excellent opportunity for the students to contribute to the life of the campus

community, and be validated for their hard work and skill. As the final project, this was a fresh and important opportunity to demonstrate the skills acquired during the semester.



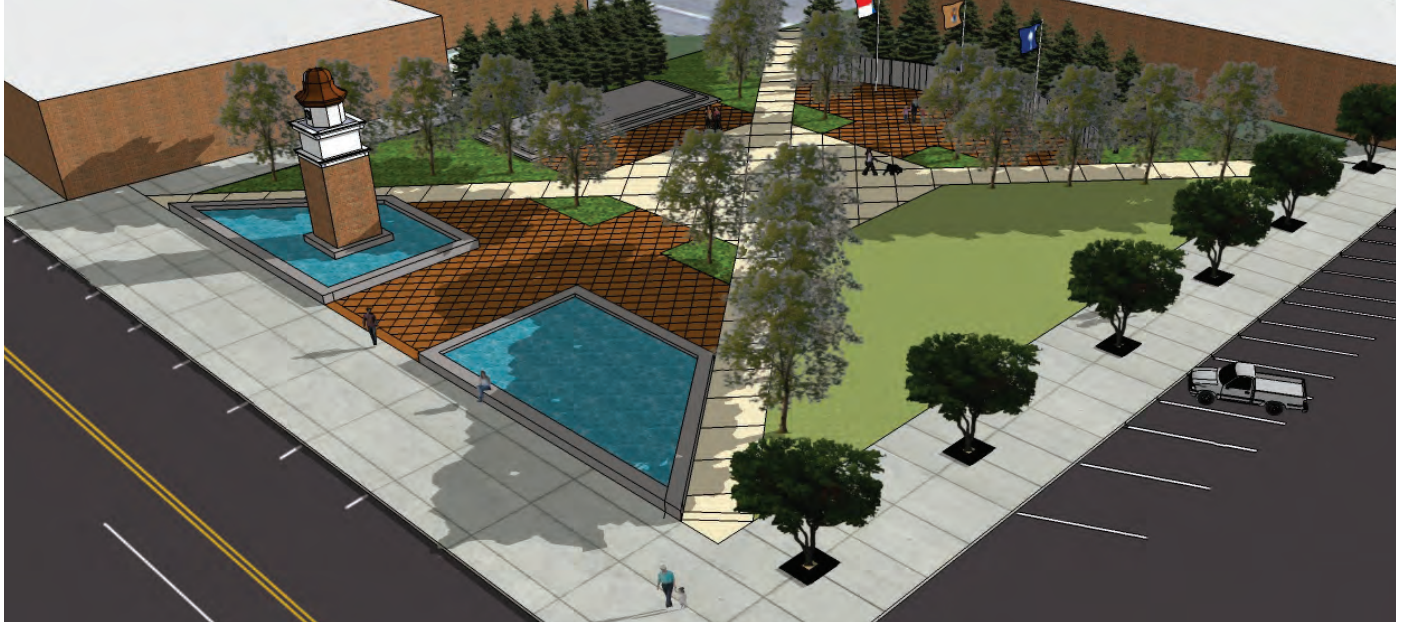
LANDSCAPE ARCHITECTURE  
& ENVIRONMENTAL PLANNING

EXTENSION   
UtahStateUniversity



# Tremonton Midland Square

TREMONTON CITY  
TREMONTON, UTAH



## FEATURES

- Plaza for Community Events
- Veterans Memorial
- Farmer's Market Staging Area
- Stage for Film and Music Events
- Water Feature with Seating
- Streetscape Improvements
- Enhanced Pedestrian Circulation
- SDAT Team Member

## OUTCOMES

- 2015 SDAT Plan Approved
- Fundraising/Communication Tool
- Future Design & Construction Tool

## IMPACTS

- Collaborate with National Experts
- Practical Experience for 5 Students
- 60+ Hours of Studio Production
- Community - Scale Design
- Public Process Experience

Produced as a member of the AIA Strategic Design Assistance Team (SDAT), our contributions include the design of Midland Square, and downtown streetscape improvements. The design includes a veterans memorial, improved pedestrian access, a stage, a farmers market, private seating areas and streetscape improvements. The SDAT Plan gives the city a tool that supports future revitalization.

The design for Midland Square accommodates new uses such as the Farmer's Market and musical/film events, and provides improved pedestrian access into and through the site. The Veteran's Memorial is a private, reflective location in the garden and the plaza and lawn area make a flat and accessible space for the Farmer's Market.

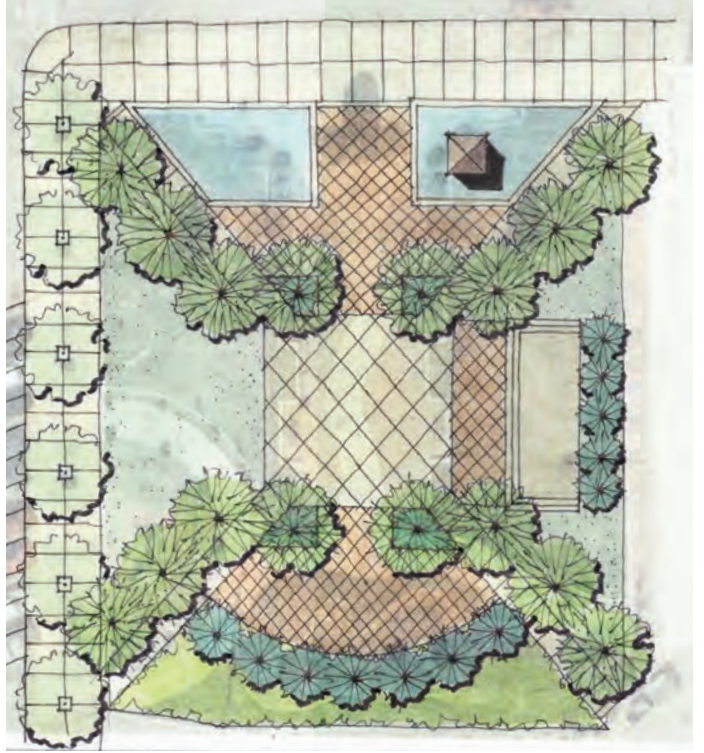
The existing Midland Square Memorial is preserved and integrated into the water feature and establishes community identity along Main Street. In addition to design support, we contributed to public facilitation and

presentation to the city council. This initial project led to additional design opportunities with the city.



LANDSCAPE ARCHITECTURE  
& ENVIRONMENTAL PLANNING

EXTENSION   
UtahStateUniversity



# Visual Communication

USU Botanical Center  
KAYSVILLE, UTAH



## FEATURES

- Promotional Signs
- 20 + Interpretive Panels
- Various Street Banners
- Various Directional Signs
- Regulatory Signs

## OUTCOMES

- Improved Circulation
- Increased Awareness
- Improved Information Sharing
- Promotion of Garden
- Promotion of local attractions

## IMPACTS

- 125K/Day on I-15 View Sign
- Increased Event Attendance
- Increased Visitation
- Information Adoption
- Supports Onsite Demonstration

This project includes development of promotional, directional, interpretive, and regulatory signage at the USU Botanical Center. An attractive, coordinated approach to consistent facility branding and identity was implemented for all signage types.

A family of signage types has been developed for the USU Botanical Center. Included in this family are promotional, directional, interpretive, and regulatory signs.

A large (18' high x 40' wide) identity sign was designed, funded, and installed next to I-15. This sign raises awareness both of the Botanical Center and USU as it is viewed by 125,000 passing cars every day. The sign identifies and gives presence to USU in an invaluable way along the Wasatch Front.

Additional directional signs have been placed to get visitors from the freeway and other major roads as well as on-site wayfinding.

Numerous interpretive panels have been developed that assist in explaining various Botanical Center objectives and demonstrations.

Other event promotion and regulatory signs have been developed to guide visitors with opportunities and on-site rules.



LANDSCAPE ARCHITECTURE  
& ENVIRONMENTAL PLANNING

EXTENSION   
UtahStateUniversity





# Lewiston Senior Living Center Garden

LEWISTON SENIOR LIVING CENTER  
LEWISTON, UTAH



## FEATURES

Resident Senior Living Facility  
Gathering Space  
Native Garden  
Fire Pit Terrace  
Dining Terrace  
Garden Seating  
Enhanced Pedestrian Access

## OUTCOMES

2015 Master Plan Approved  
Fundraising/Communication Tool  
Project Out to Bid  
Fall 2015 Construction

## IMPACTS

Drone Learning Experience  
50+ Hours of Studio Production  
Practical Experience for 4 Students  
12 Residents Served  
Construction Fall 2015

The Senior Living Center Garden is a plan with sweeping views of the mountains and a diverse, accessible native garden. The garden includes a dining terrace, a fire pit plaza, new walkways, garden sitting spaces and a rich collection of native plantings. The seasonal character of the garden provides year around interest, and serves private and community use.

The site is adjacent to an elementary school and the county fairgrounds, with the Wasatch Range as backdrop. The fire pit plaza is oriented to these long, open views. The garden is ADA accessible and includes a diverse collection of native plants, with seating throughout. The plan and perspective sketches are being used for bidding and fundraising. Construction is scheduled for Fall 2015.

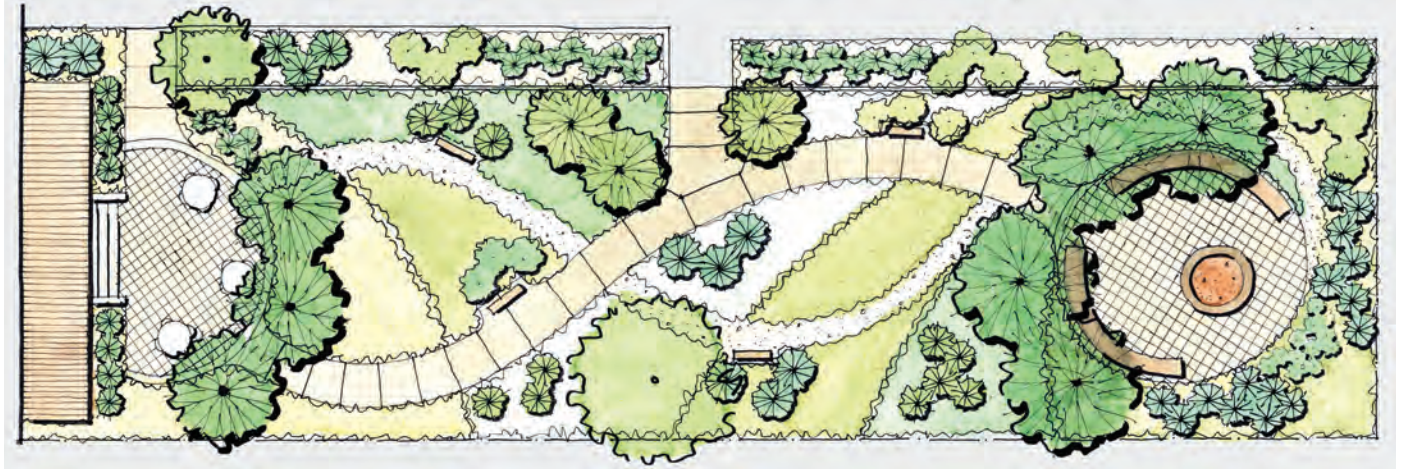
The pathway design of the garden includes a 4' wide paved path and a 2' wide gravel path. Two paved plazas anchor the eastern and western ends of

the garden. A dining terrace to the east and a fire pit terrace to the west accommodate multiple uses and users. Interior garden paths and benches provide intimate use areas and seating space.



LANDSCAPE ARCHITECTURE  
& ENVIRONMENTAL PLANNING

EXTENSION   
UtahStateUniversity



# Lions Park & Transportation Hub

LIONS PARK PLANNING GROUP  
MOAB, UTAH



## FEATURES

- Currently Under Construction
- 5 + Acres
- Regional Trail Junction
- Moab Community Park
- Information Center
- Regional Transit Hub
- Information Center/Restrooms

## OUTCOMES

- 4 Student Stipends
- Service Learning Experience
- Public Display and Comment
- Consensus Plan

## IMPACTS

- Multi-Agency Coordination
- \$100K Grant for Final Design
- Transit Hub for Arches N.P.
- 1 Million Annual Visitors
- 2 1/2 Mile River Trail - \$9 M

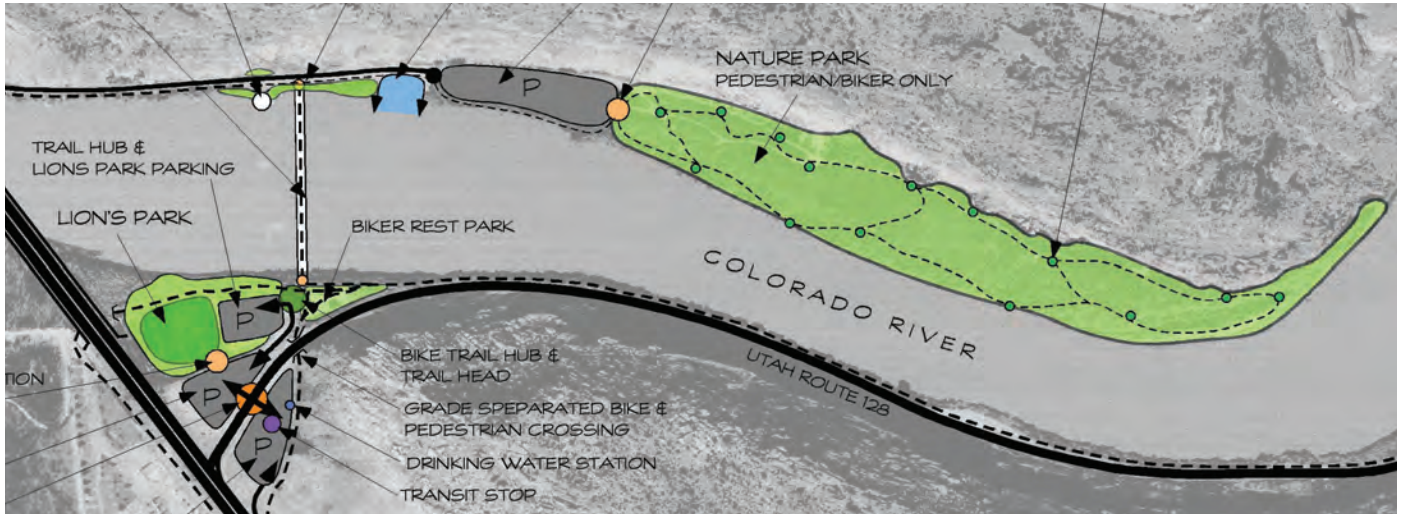
It is not often that a strategically located piece of landscape is available to serve so many user groups and in such significant ways. Located just east of the US 191 highway bridge that crosses over the Colorado River, the property is triangular in shape and straddles Utah Highway 128. Mountain bikers, tourists, locals and many more will use its facilities and enjoy its ambiance.

A few years ago a group of people with mountain biking interests got together to discuss the future of Lions Park where major hiking/biking trails intersected. It became obvious as to how important this piece of landscape was and the group grew into a large committee with a variety of interests in the future. The major challenge of working on this project was to develop a good plan that addressed the issues coming from this large committee. Many alternatives and versions were developed before a plan was selected to move forward with. It took a number of years.



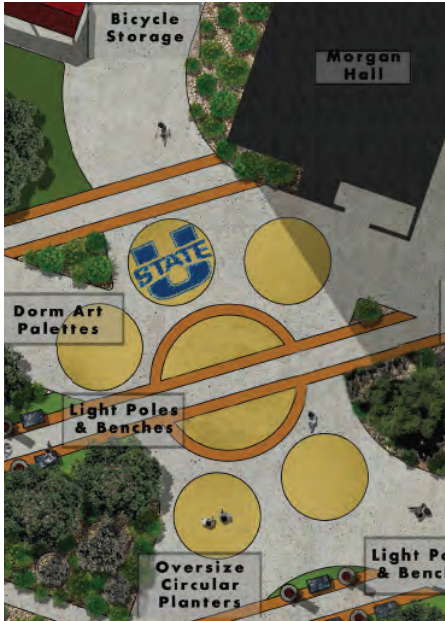
LANDSCAPE ARCHITECTURE  
& ENVIRONMENTAL PLANNING

EXTENSION   
UtahStateUniversity



# USU Student Living Center

UTAH STATE UNIVERSITY  
LOGAN, UTAH



## FEATURES

- Four Mid-Rise Housing Towers
- Improved Fire Access
- New Bicycle Storage
- Outdoor Plaza
- Intimate Study and Use Areas
- Improved Pedestrian Circulation
- Defined Heart of the Living Center

## OUTCOMES

- 2015 Master Plans Approved
- Fundraising/Communication Tool
- New Fire Access Codes Applied
- Future Design/Construction Tool

## IMPACTS

- 1000+ Student Residents Served
- Experience for 9 Students
- 70+ Hours of Studio Learning
- USU Housing Served

The Student Living Center plan establishes a diverse heart to this important housing complex. The design meets updated fire access requirements, while creating a public plaza, intimate outdoor use areas, improved pedestrian access and new bicycle parking facilities. The plan serves as a touchstone for future planning and design by USU housing

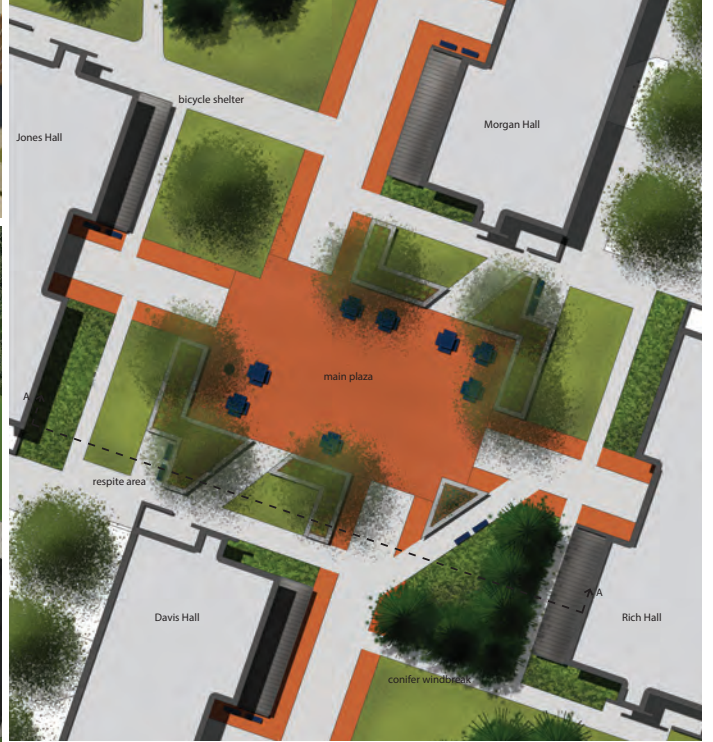
The primary challenge of the design was meeting fire access and staging requirements of the site. Two design plans, with sections and perspective sketches, were prepared and presented to representations of USU Housing and the Fire Department. The plans are invaluable communication tools as design and planning move forward.

The plans improve the quality of life for the residents by creating an attractive space for individual and group use, while improving pedestrian, bicycle and fire access. The garden is sustainable and low water use, and defines the plaza and intimate outdoor use areas.



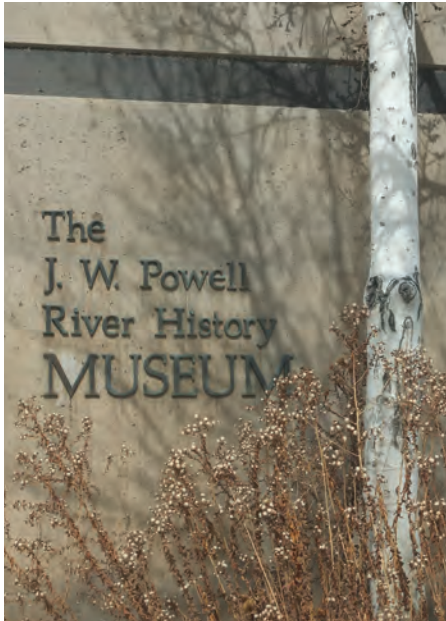
LANDSCAPE ARCHITECTURE  
& ENVIRONMENTAL PLANNING

EXTENSION   
UtahStateUniversity



# Powell Museum Sustainable Landscape Plan

CITY OF GREEN RIVER  
GREEN RIVER, UTAH



## FEATURES

- Approximately 3 Acres in Size
- Outdoor Interpretive Facilities
- Public Space for Locals
- Picnic Areas for Visitors
- 2 Amphitheatres
- On/Off -Site Trail System

## OUTCOMES

- 2 Alternative Concept Plans
- Schematic Landscape Plan
- Concept Irrigation Plan
- Plant List & Cost Estimate
- Phasing Plan & Strategy
- Trail Connections Plan
- Improved Parking System
- 3 Presentations to City Council

## IMPACTS

- 75% Less Turf & 50% Water Savings
- \$500K +/- Construction Cost
- Grad Student Support
- Projected 300K Annual Visitors

Our challenge was to reduce water consumption which was accomplished by eliminating grass except where it was needed in high traffic use areas. We also produced a plan that added Museum facilities to the outdoors with interpretive information, amphitheatres and picnic areas and tied it all together with a trail system.

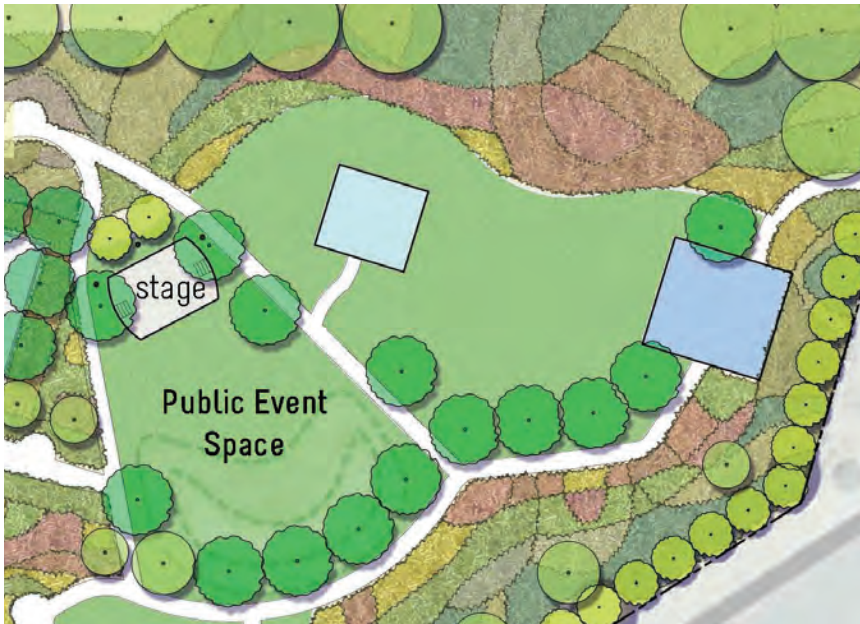
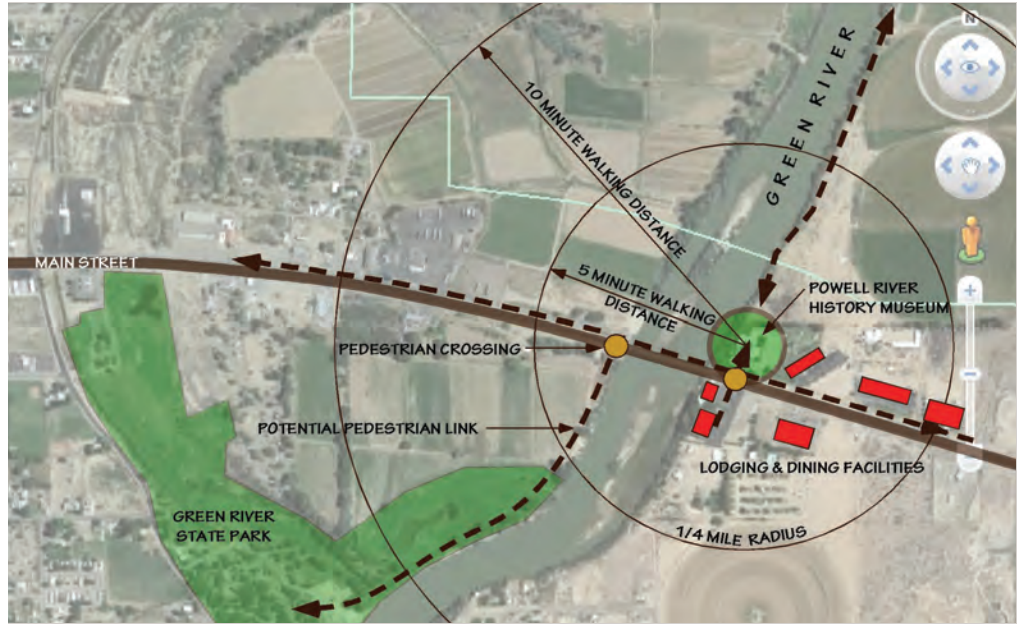
In the past there was no way to experience any of the museum when it was closed. Our concept plans included adding artifacts and interpretive information along a trail system that would provide local and regional information anytime during daylight hours and added amphitheatres that could be used by local interest groups. The on-site trail would have information about regional trails and would provide links and/or connections to those trail systems.



LANDSCAPE ARCHITECTURE  
& ENVIRONMENTAL PLANNING

EXTENSION   
UtahStateUniversity





# Tremonton Neighborhood Park

TREMONTON CITY  
TREMONTON, UTAH



## FEATURES

- 9 Car Parking Lot
- Access to Existing Trail System
- Restroom Facility
- Picnic Area
- Children's Play Area
- Informational Kiosk
- Native Landscape Design

## OUTCOMES

- 2015 City Council Approval
- Fundraising/Communication Tool
- Future Design Tool

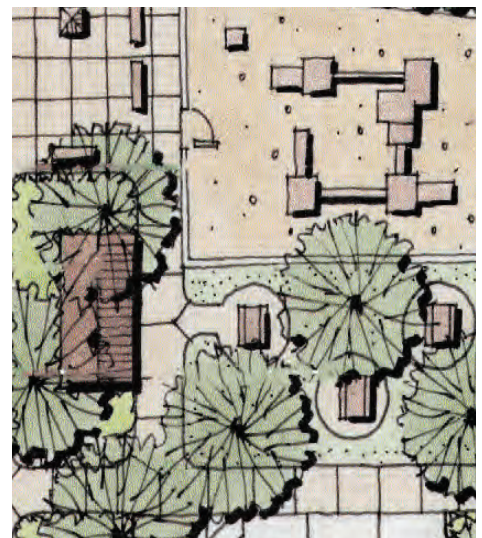
## IMPACTS

- Practice Experience for 3 Students
- 95+ Hours of Practice Learning
- Community Scale Design Impact
- Play & Picnic for Local Families
- Student Design & Graphic Learning

The Tremonton Neighborhood Park plan addresses a shortfall of public space in a developing area of the city, and provides parking and pedestrian access to an existing trail system. In addition to improved vehicular and pedestrian access, the design includes a children's play area, a restroom facility, informational kiosk, picnic area and native garden.

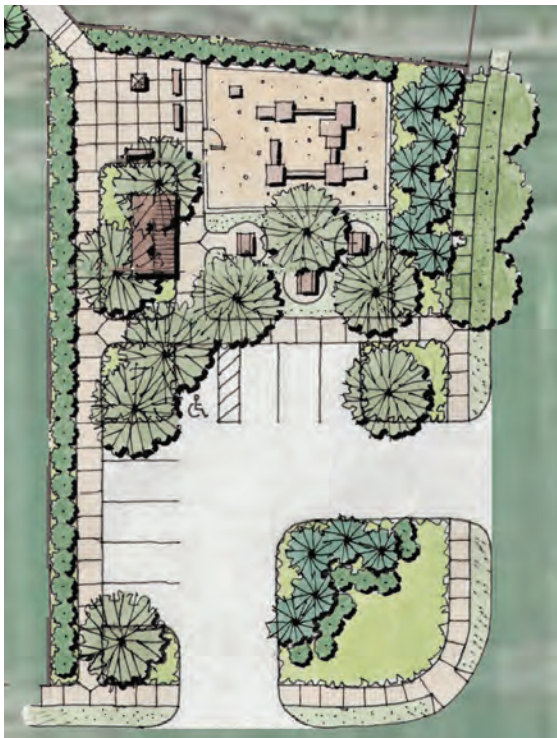
This is a small site that occupies one residential lot in a new development. The design challenge was to fit the park program elements into the plan and provide parking and staging for trail use. The master plan and perspective sketches were enthusiastically received by the city council and will guide the fundraising and detailed design that lies ahead.

The park serves as a trailhead for the Malad River Trail with an informational/educational kiosk. A restroom facility serves both the trail and park users and the play area and picnic space is geared toward the neighborhood residents.



LANDSCAPE ARCHITECTURE  
& ENVIRONMENTAL PLANNING

EXTENSION   
UtahStateUniversity



# 9-11 Memorial

USU BOTANICAL CENTER  
KAYSVILLE, UTAH



## FEATURES

- Outdoor Plaza
- Memorial Wall
- Statue
- Plantings
- Circulations
- Lighting

## OUTCOMES

- Increased Awareness
- Community Gathering Place
- Honor Victims of 9-11
- Completed 2013

## IMPACTS

- Preserve History
- Opportunity for Reflection
- 5,000+ Annual Visitors
- Personal Memorial for 132 Families

The 9-11 Memorial at the USU Botanical Center honors three victims of the terrorist attack. Two of the victims were from Kaysville, Utah and the third was a USU graduate. The memorial also features the names of 129 U.S. servicemen and women from Utah who have died since the attacks in the ongoing war on terrorism.

After 9-11, USU was approached by a non-profit group, Utah Unites In Hope, with the idea of developing a memorial to honor local victims of the 9-11 attacks. The USU Botanical Center was offered as a suitable location for the memorial.

A tremendous amount of effort was put forward by the non-profit, the Botanical Center, USU Extension, and a local architectural firm to identify a design approach and complete the memorial. UNITY, REMEMBRANCE, and HOPE were identified as themes that guided the design.

The memorial is an oval-shaped plaza of scored, colored concrete, sunken into a westerly slope. The east wall serves as a retaining wall and a backdrop for the bronze plaques bearing the names of the 9-11 victims and the servicemen and women. The memorial is flanked by a curved stone sitting wall and stone benches. In the center is a large bronze statue of a firefighter holding a child, a symbol of hope for the future. Plantings of crabapples and stately Red and Bur surround the memorial.

LANDSCAPE ARCHITECTURE  
& ENVIRONMENTAL PLANNING

EXTENSION   
UtahStateUniversity



# Don and Janet Wolford Riverside Retreat

RIVERSIDE RETREAT TRUST  
LOGAN, UTAH



## FEATURES

- Water Feature Memorial
- Frontage on Logan River
- River Overlook
- ADA Access
- Shade Pavilion
- Fire Pit Area
- Outdoor Kitchen
- River Access and Fishing
- Website Design

## OUTCOMES

- 2015 Master Plan Approved
- Fundraising/Communication Tool
- Phase One Construction Planned

## IMPACTS

- Contractor Hired
- Fall 2015 Construction Begins
- Practical Experience for 4 Students
- Website Designed & Online
- Donations Collected
- 120+ Hours of Studio Learning

The Don and Janet Wolford Riverside Retreat focuses on public access to a ¼ mile stretch of the Logan River. The design provides a range of passive recreational uses, including an observation deck, a shaded pavilion area, an outdoor kitchen, a fire pit plaza and public access to the river's edge.

A private citizen purchased the property and established a non-profit organization for design and construction.. In addition to design and graphics, the students prepared a website for information and fundraising. A landscape contractor has been hired and the start of construction is scheduled for Fall 2015.

The design provides access to the river's edge and serves as an example of citizen initiated change. The sensitivity to ADA access, the variety of passive use areas and the connection to the river all contribute to a unique public amenity. The design was developed in

collaboration with a local landscape contractor who will lead the design development and construction process.



LANDSCAPE ARCHITECTURE  
& ENVIRONMENTAL PLANNING

EXTENSION   
UtahStateUniversity



# Communication Tool

USU BOTANICAL CENTER  
KAYSVILLE, UTAH



## FEATURES

- Updated Website
- Electronic Newsletter
- Facebook
- Instagram

## OUTCOMES

- Improved Event Promotion
- Increased Awareness
- Improved Information Sharing
- Promotion of Garden Identity

## IMPACTS

- 6,000 Newsletter Subscribers
- 25% Newsletter Open Rate
- 700 Weekly FB Posts
- 2nd Quarter 2016 :  
9,500 Unique Web Visit
- 14,000 Web Visits
- 45,000 Page Views

The USU Botanical Center is growing, with added physical facilities and Cooperative Extension programs and events. Effective communication tools are essential to assist in the dissemination of useful information to users. The development of an updated website, electronic newsletter, and various forms of social media help in sharing of useful information and advertising of events.

Providing meaningful information to the public is core to USU Extension's mission. The USU Botanical Center, along with the Ogden Botanical Garden are now organized digitally under Gardening.usu.edu.

Information about the gardens is shared through a range of digital means including a webpage, linking to other Extension web data, an electronic newsletter, and various forms of social media tools (Facebook, Twitter, Instagram).

These tools allow the gardens to promote events, classes, and activities.

They build awareness about the gardens and USU. They engage people in gardening and landscaping topics, and are very helpful in building a sense of community.

LANDSCAPE ARCHITECTURE  
& ENVIRONMENTAL PLANNING

**UtahStateUniversity**  
**BOTANICAL CENTER**

**EXTENSION**   
**UtahStateUniversity**





**Make the 'water-wise' change today**

Homeowners often think they can't create a beautiful and colorful landscape without a conventional design that includes a lot of thirsty plants. But that isn't the case. Utah is home to many varieties of beautiful plants that are adapted to the arid climate. It is just a matter of learning which plants are considered water-wise and how to implement the right irrigation.



To help homeowners reach their water conservation goals, Utah State University Extension has a list of resources that can help when deciding which plants to purchase, how to design your landscape and more.

[Click here for more information.](#)

**Mobile Apps to help you with your gardening**

What is the weed that's taking over my garden? Which fruit and vegetable varieties do well in Utah? What options are there for controlling codling moth on my fruit trees? These and many other questions about gardening and landscaping in Utah are answered in these free USU Extension mobile apps:

- *Common Weeds of the Yard and Garden*
- *Fruit Pestfinder: Pests of Fruit Crops in the Western US*
- *Growing Vegetables, Fruits & Herbs*
- *Tree Browser*
- *Utah TRAPS: Temperature Resource and Alerts for Pests*



[Click here to learn more about our apps.](#)



**Dash in the Dark: Fun Run 5k**

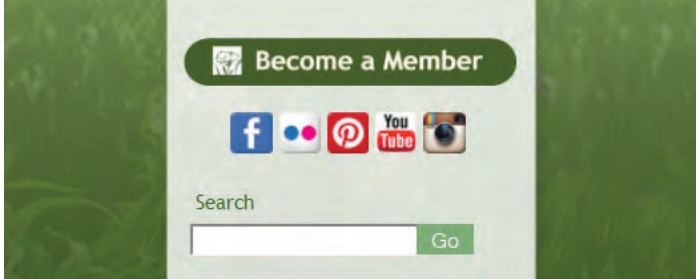
The Utah State University Botanical Center will host its first ever Dash in the Dark 5k on Friday, October 24. The fun run will take place at the USUBC, 920 South 50 West, Kaysville.

Participants will have the opportunity to jog through the USUBC garden trails, around ponds and through the center's arboretum while being chased by infectious zombies. This event is open to all ages 12 years old or above and welcomes those of any athletic ability.

Tickets are on sale now for early registration at \$12. Registration will be \$15 starting the week of the event.

[To register, click here.](#)

The first 50 registered runners will receive a free headlamp. The race will begin at 6 p.m. and an award ceremony follows. For those interested in playing zombies, please contact Jayne Mulford at [jayne.mulford@usu.edu](mailto:jayne.mulford@usu.edu).



**Utah Botanical Center** added 9 new photos. 1 hr · Edited · 🌐

Can you guess what all these pictures have in common? These are all examples of beautiful plants that can be used in your xeriscape plans.

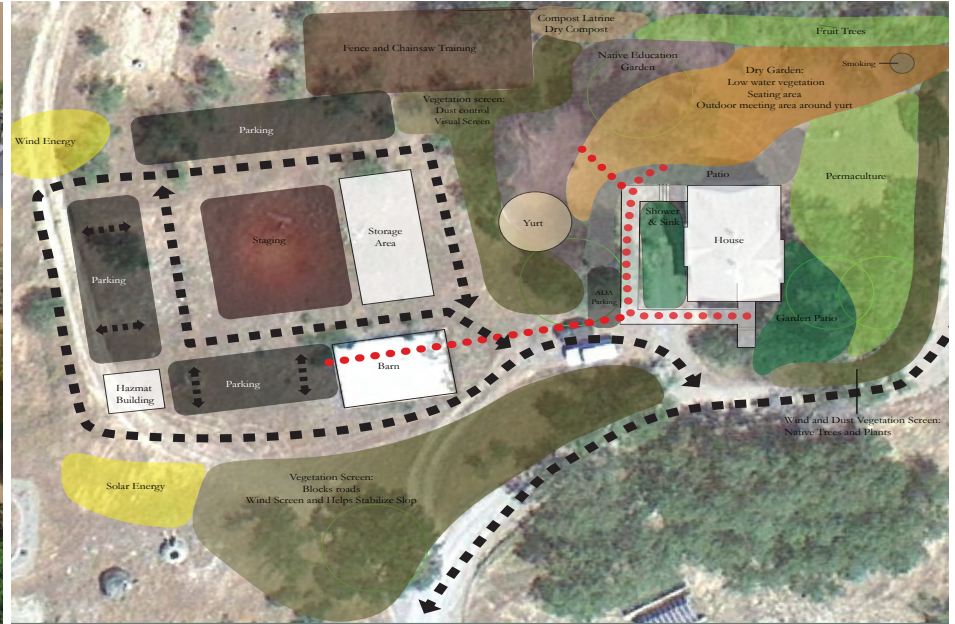
Many are familiar and some are paired with traditional plants (like the roses that can tolerate less water with the help of good mulch), and the combinations make for beautiful, water-wise designs.

Happy "xeriscaping", not "zeroscaping!" 😊



# Center for Civic Engagement & Service Learning

UTAH STATE UNIVERSITY  
LOGAN, UTAH



## FEATURES

- One-Acre Site
- AmeriCorps Training Facility
- Tool Storage & Staging
- Solar & Wind Power
- Workshop & Storage Buildings
- Access & Circulation Issues

## OUTCOMES

- 2015 Master Plan Approved
- Fundraising/Communication Tool

## IMPACTS

- 30+ AmeriCorps Workers Served
- Phase One Construction Fall 2015
- Storm Water Storage
- Composted Sewage Treatment
- Improved Access, Training, Staging
- Experience for 5 Students

The Master Plan improves vehicular and pedestrian circulation, defines storage, staging and training zones for AmeriCorps projects, establishes organic gardening areas for shared use, creates outdoor social space, and delineates areas for solar and wind power generation. The design enhances the efficiency and safety of the site and addresses a diverse collection of program objectives.

Given the number of AmeriCorps workers and other users, the plan is organized around vehicular and pedestrian circulation. The site plan serves a diverse group of users, and demonstrates innovative approaches to power generation, food production, water storage and sewage treatment.

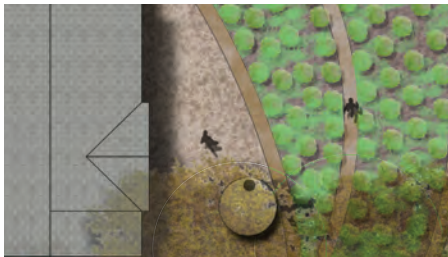
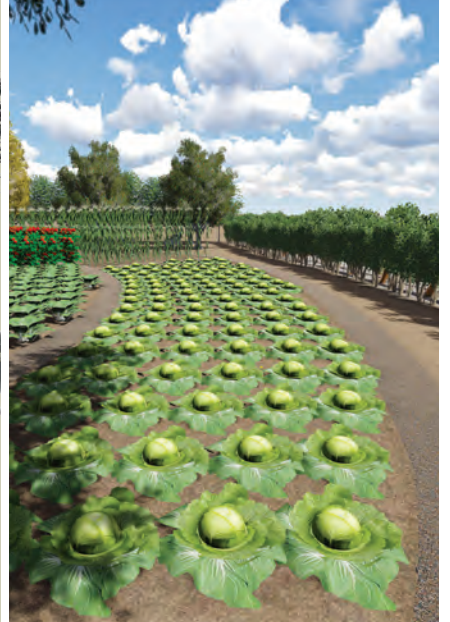
The existing site is on the periphery of campus with the potential for a trail linkage. The design envisions a trail connecting the site to a tunnel running under Route 84. The plan, sections and perspectives sketches are valuable communication tools for fundraising,

and set the stage for detailed design and construction. Phase one construction is planned for Fall 2015.



LANDSCAPE ARCHITECTURE  
& ENVIRONMENTAL PLANNING

EXTENSION   
UtahStateUniversity



# Central Utah Pioneer Heritage Garden

CENTRAL UTAH HERITAGE FOUNDATION  
MANTI, UTAH



## FEATURES

- 2.5 Acres
- Opened May 2012
- Amphitheater
- 3 Pioneer History Theme Gardens
- Reflection Pool
- Walkways

## OUTCOMES

- Regional Analysis & Site Analysis
- Concept Plan & Consensus Plan
- PowerPoint Presentation

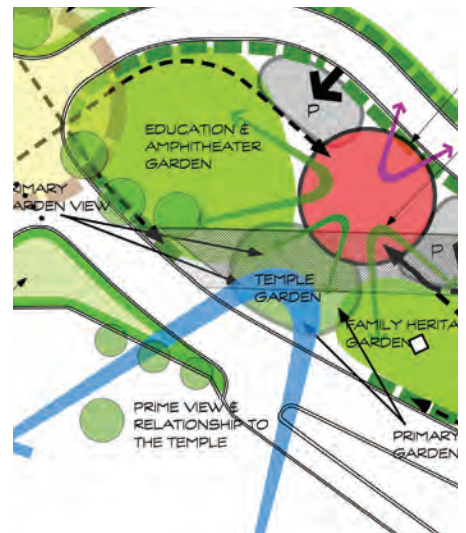
## IMPACTS

- Raised \$20K for Consulting Fees
- \$450K Construction Costs
- Entry Enhanced for 8K Cars/Day
- Pioneer History Information
- 5 Min. Walk for 50K Temple Visitors
- 2 Min. Walk for 4K Cemetery Visitors
- 5 Min. Walk for 120K Pageant Guests

USU Extension provided preliminary planning and design work that established the basis for a consensus plan for the Heritage Gardens project. That concept helped enable funding for construction and final design work. Today beautiful gardens provide a setting for historical information, educational opportunities, art work, group and family gatherings and contemplation.

*"This Pioneer Heritage Garden has captured, I think, the essence of what makes these little Utah communities great. It addresses the issues of industry, and cooperation, and education, and especially faith. Anyone stopping here will be prompted to reflect and dig a little bit deeper in his or her own life."*

—Elder Marlin K. Jensen  
LDS Church Authority



LANDSCAPE ARCHITECTURE  
& ENVIRONMENTAL PLANNING

EXTENSION   
UtahStateUniversity



Department of Landscape Architecture  
& Environmental Planning

4005 Old Main Hill  
Logan, Utah 84322  
[laep.usu.edu](http://laep.usu.edu)

David Anderson  
(435) 797-0514  
[david.anderson@usu.edu](mailto:david.anderson@usu.edu)

David Bell  
(435) 797-0510  
[david.bell@usu.edu](mailto:david.bell@usu.edu)

David Evans  
(435) 797-0508  
[david.evans@usu.edu](mailto:david.evans@usu.edu)

LANDSCAPE ARCHITECTURE  
& ENVIRONMENTAL PLANNING

EXTENSION   
UtahStateUniversity